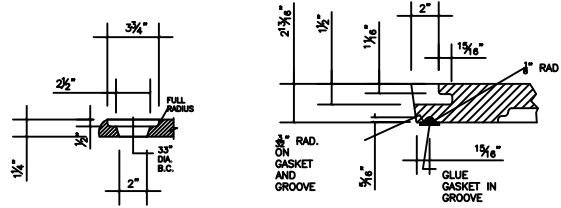
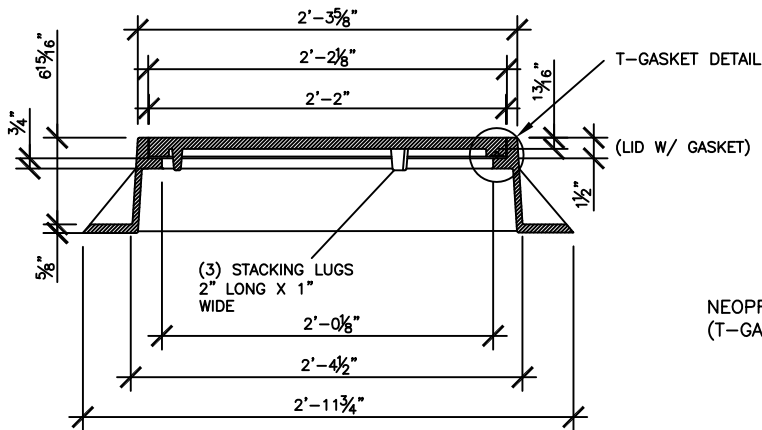


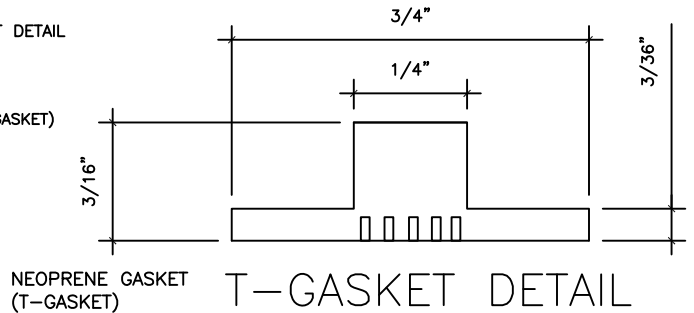
PLAN VIEW



PICKHOLE/GASKET DETAIL



CROSS-SECTION VIEW



SPECIFICATIONS:

ALL MATERIAL IS ASTM A48 CLASS 35B GRAY IRON.
 (4) 1" DIAMETER BOLT HOLES IN FRAME
 TOTAL WEIGHT IS 326 LBS.
 SUITABLE FOR H25 LOAD DESIGN.

**Continental
Concrete
Products, Inc.**
 1 South Grosstown Rd.
 Pottstown, PA 19464
 Phone: (610) 327-3700
 Fax: (610) 327-9488

26" DIA. SANITARY SEWER FRAME AND COVER (24" Ø CLEAR OPENING IN FRAME & GASKETED COVER)			
<u>SIGNATURE OF APPROVAL</u>	<u>DATE</u>	<u>AR</u>	<u>DWG</u>
	2/08/16		26SMHFC
			<u>STRUCTURE</u>