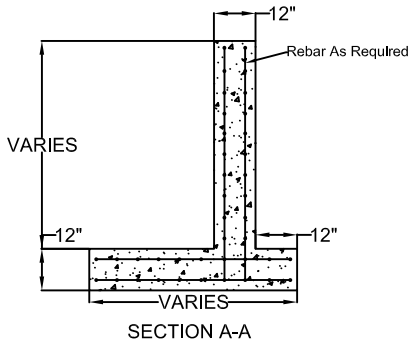
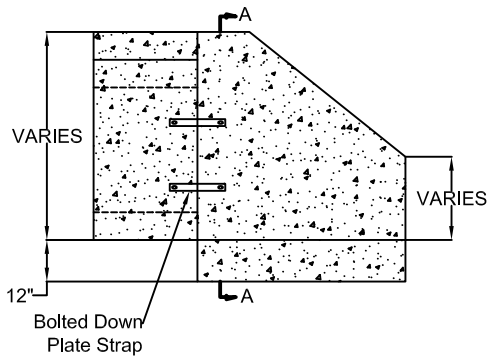
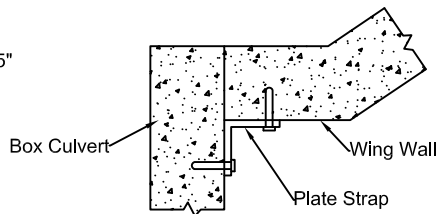
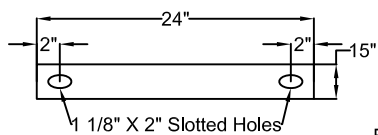


**HEADWALL DETAIL**



**WING WALL DETAIL**



**PLATE STRAP DETAIL**

**SPECIFICATIONS:**

MINIMUM CONCRETE STRENGTH 4000 PSI @ 28 DAYS (PENNDOT CLASS AA)  
 MATERIALS AND WORKMANSHIP IN ACCORDANCE WITH THE REQUIREMENTS  
 OF PENNDOT PUBLICATION 408 SECTION 605 & 714  
 STEEL REINFORCEMENT A615 GRADE 60 HORIZONTAL AND VERTICAL

**Continental  
Concrete  
Products, Inc.**  
 1 South Grosstown Rd.  
 Pottstown, PA 19464  
 Phone: (610) 327-3700  
 Fax: (610) 327-9488

**BOX CULVERT HEADWALL & WING WALLS DETAIL**

SIGNATURE OF APPROVAL

DATE    AR    DWG

STRUCTURE

2/08/16

BCHW-WW