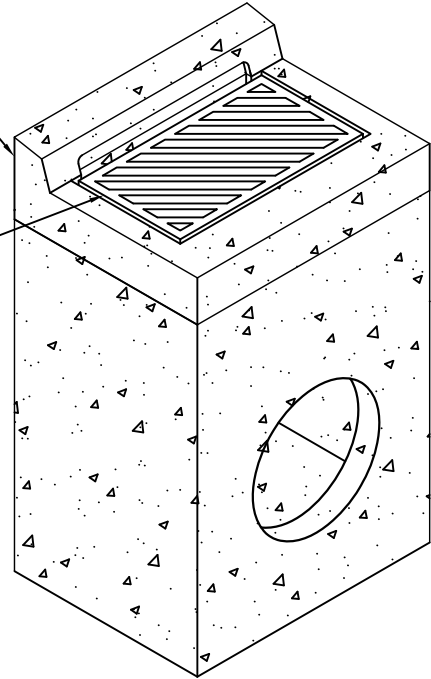


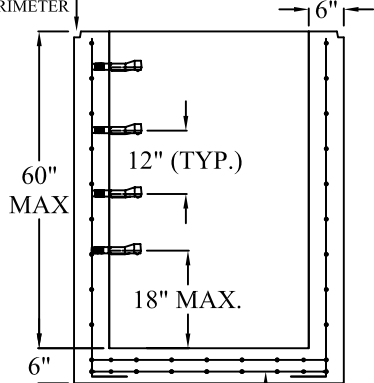
TOP UNIT TO BE FORMED AND CAST IN FIELD

DELDOT TYPE 1 STANDARD FRAME & GRATE

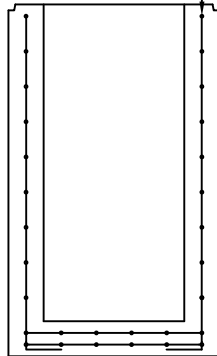


VERTICAL WALL REINFORCEMENT: REINFORCED A.S.T.M. A615 0.12IN /FT EACH WAY

1" X 1" KEYWAY AROUND PERIMETER OF BOX

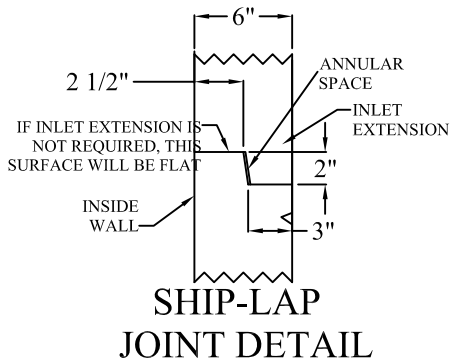


BASE SLAB REINFORCEMENT: TWO LAYERS OF REINFORCING A.S.T.M. A615 0.20IN² /FT. EACH WAY / EACH LAYER

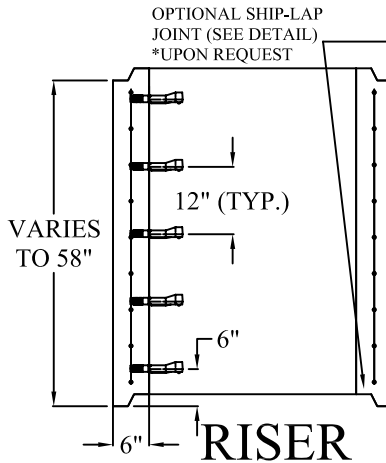


BASE SECTION B-B

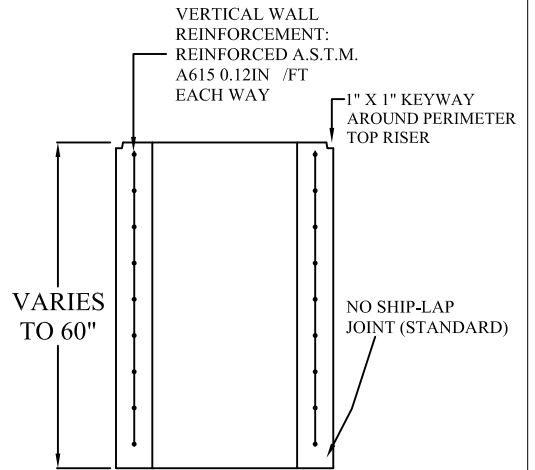
BASE SECTION A-A



SHIP-LAP JOINT DETAIL



RISER SECTION A-A



RISER SECTION B-B

RISER SECTION A-A SECTION B-B

SPECIFICATIONS:

MINIMUM CONCRETE STRENGTH 4000 PSI @ 28 DAYS
 MATERIALS AND WORKMANSHIP IN ACCORDANCE WITH THE REQUIREMENTS OF DELAWARE DEPARTMENT OF TRANSPORTATION
 STEEL REINFORCEMENT A615 GRADE 60 HORIZONTAL AND VERTICAL

Continental Concrete Products, Inc.
 1 South Grosstown Rd.
 Pottstown, PA 19464
 Phone: (610) 327-3700
 Fax: (610) 327-9488

DELDOT 24" X 34" DRAINAGE INLET BOX & RISER SECTION

SIGNATURE OF APPROVAL

DATE

AR

DWG

STRUCTURE

2/08/16

DEL24X34IB