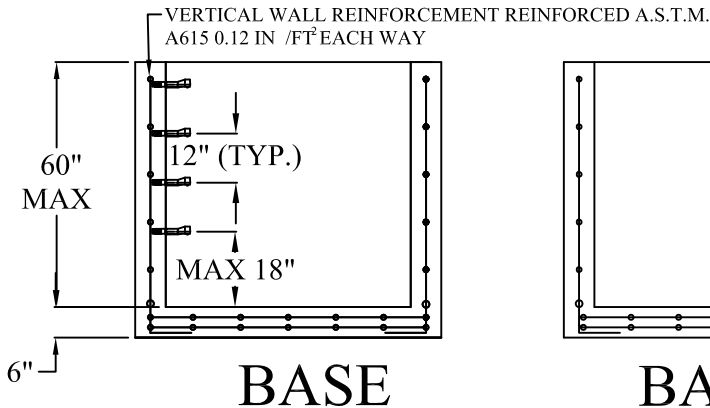
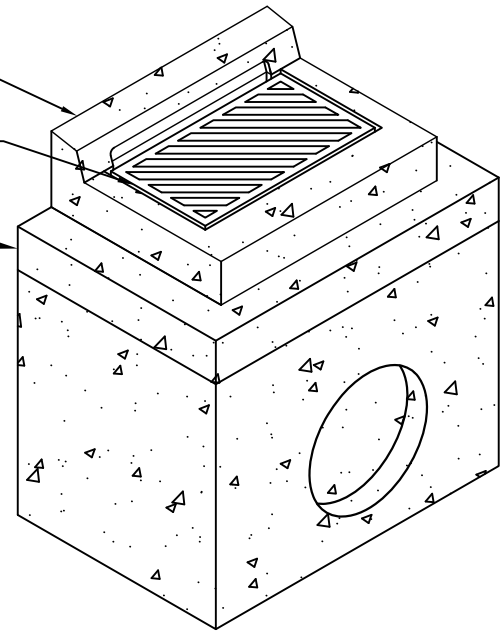


TOP UNIT TO BE FORMED AND CAST IN FIELD

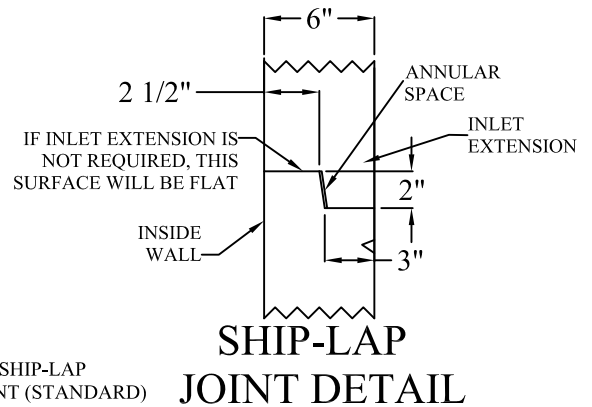
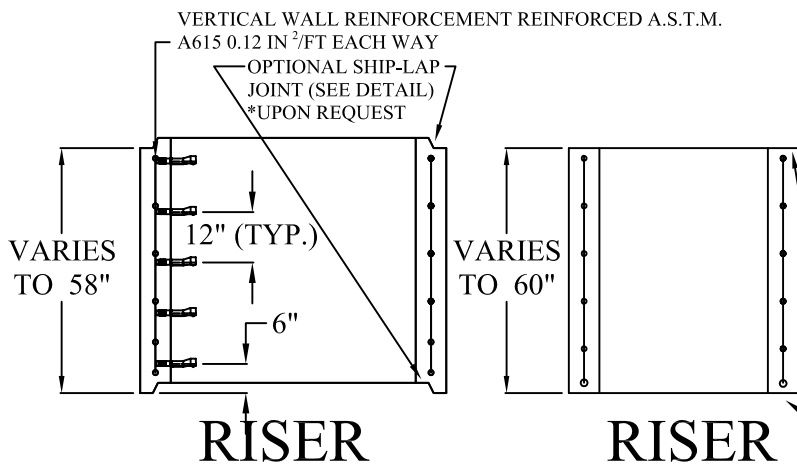
DELDOT TYPE 1 STANDARD FRAME & GRATE

PRECAST INLET CONVERSION LID



BASE SLAB REINFORCEMENT:  
TWO LAYERS OF REINFORCEMENT A.S.T.M.  
A615 0.20 IN<sup>2</sup>/FT EACH WAY; EACH LAYER

**SECTION A-A SECTION B-B**



**SECTION A-A SECTION B-B**

**SPECIFICATIONS:**

MINIMUM CONCRETE STRENGTH 4000 PSI @ 28 DAYS  
MATERIALS AND WORKMANSHIP IN ACCORDANCE WITH THE REQUIREMENTS OF DELAWARE DEPARTMENT OF TRANSPORTATION  
STEEL REINFORCEMENT A615 GRADE 60 HORIZONTAL AND VERTICAL

**Continental  
Concrete  
Products, Inc.**  
1 South Grosstown Rd.  
Pottstown, PA 19464  
Phone: (610) 327-3700  
Fax: (610) 327-9488

**DELDOT 33" X 48"  
DRAINAGE INLET BOX & RISER SECTION**

SIGNATURE OF APPROVAL

DATE

VAR

DWG

STRUCTURE

2/08/16

DEL33X48IB