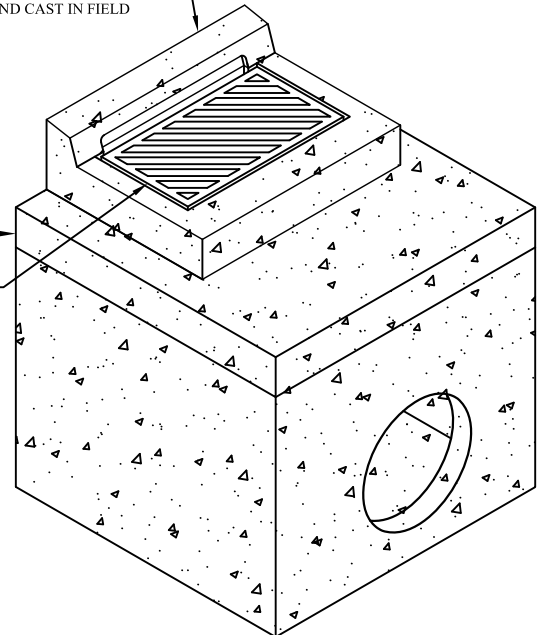


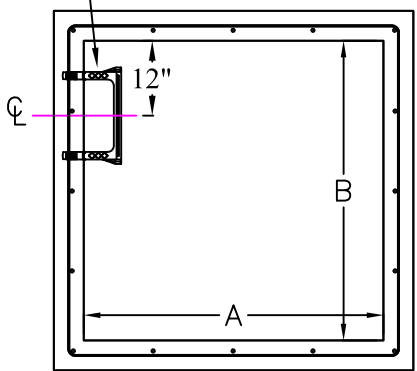
BOX SIZE	(A)	(B)	(C)	(D)	(E)	(F)	MAX WEIGHT
48"X48"	48"	48"	MAX 72"	MAX 70"	6"	6"	5 TONS
60"X60"	60"	60"	MAX 72"	MAX 70"	6"	6"	6 TONS
72"X72"	72"	72"	MAX 96"	MAX 94"	6" OR 8"	8"	9 TONS

TOP UNIT TO BE FORMED AND CAST IN FIELD

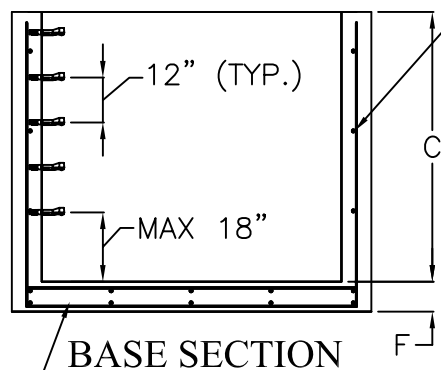


PRECAST INLET CONVERSION LID  
DELDOT TYPE I STANDARD FRAME & GRATE

12" WIDE MANHOLE STEPS



PLAN

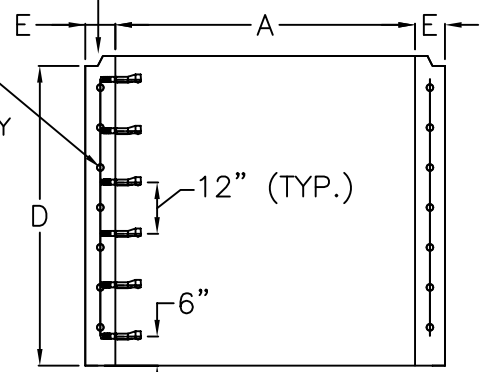


BASE SECTION

FLOOR REINFORCEMENT:  
MIN 0.20 IN<sup>2</sup>/FT. EACH WAY  
EACH LAYER

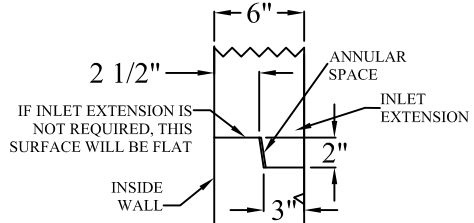
WALL REINFORCEMENT:  
(48" X 48" BOX)  
MIN 0.12 IN<sup>2</sup>/FT EACH WAY  
(60" X 60" & 72" X 72")  
MIN 0.20 IN<sup>2</sup>/FT

OPTIONAL SHIP-LAP JOINT (SEE DETAIL)  
\*UPON REQUEST



RISER SECTION

NO SHIP-LAP JOINT (STANDARD)



SHIP-LAP JOINT DETAIL

**SPECIFICATIONS:**

MINIMUM CONCRETE STRENGTH 4000 PSI @ 28 DAYS  
MATERIALS AND WORKMANSHIP IN ACCORDANCE WITH THE REQUIREMENTS OF DELAWARE DEPARTMENT OF TRANSPORTATION  
STEEL REINFORCEMENT A615 GRADE 60 HORIZONTAL AND VERTICAL



**Continental Concrete Products, Inc.**  
1 South Grosstown Rd.  
Pottstown, PA 19464  
Phone: (610) 327-3700  
Fax: (610) 327-9488

**DELDOT 48" X 48", 60" X 60" & 72" X 72" DRAINAGE INLET BOX & RISER SECTION (MODIFIED DRAINAGE INLET BOX FOR LARGE PIPE)**

SIGNATURE OF APPROVAL	DATE	AR	DWG	STRUCTURE
	2/08/16		DEL4X4-6X6IB	