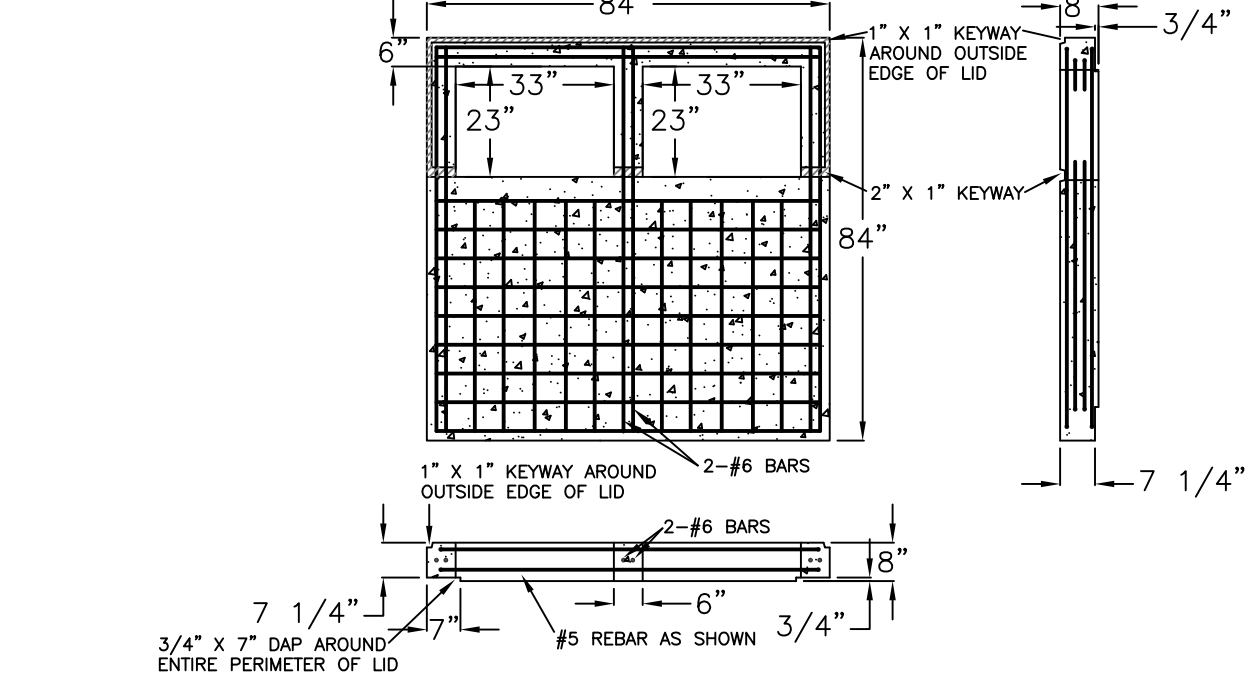


SINGLE GRATE



DOUBLE GRATE

SPECIFICATIONS:

MINIMUM CONCRETE STRENGTH 4000 PSI @ 28 DAYS
 MATERIALS AND WORKMANSHIP IN ACCORDANCE WITH THE REQUIREMENTS
 OF DELAWARE DEPARTMENT OF TRANSPORTATION
 ALL BARS ARE TO BE #5 SPACED @ 6" UNLESS NOTED OTHERWISE
 TOP REINFORCEMENT SHALL BE 0.11 IN² HORIZONTAL REINFORCEMENT
 PER FOOT IN BOTH DIRECTIONS

**Continental
Concrete
Products, Inc.**
 1 South Grosstown Rd.
 Pottstown, PA 19464
 Phone: (610) 327-3700
 Fax: (610) 327-9488

DELDOT 72" X 72" CONVERSION LID w/ 24" X 34" DRAINAGE INLET OPENING (SINGLE & DOUBLE FRAME & GRATE)			
SIGNATURE OF APPROVAL	DATE	AR	DWG
	2/08/16		DEL72x72-24x34CV
STRUCTURE			