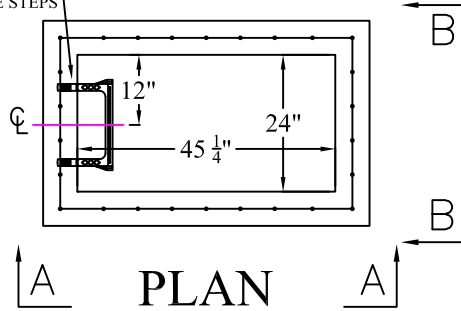
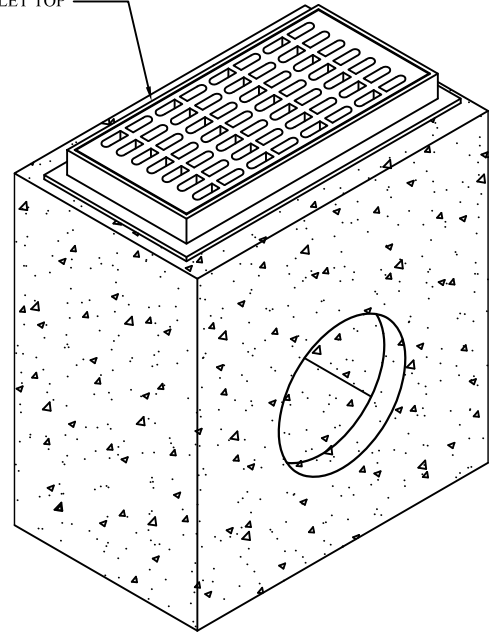


12" WIDE
MANHOLE STEPS

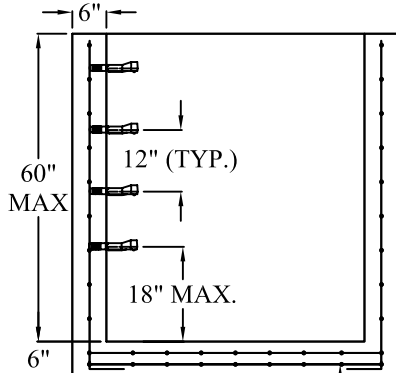


PLAN

NEW JERSEY TYPE A
INLET TOP

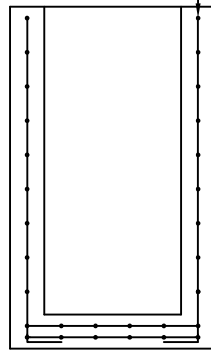


VERTICAL WALL
REINFORCEMENT:
REINFORCED A.S.T.M.
A615 0.12IN² /FT
EACH WAY

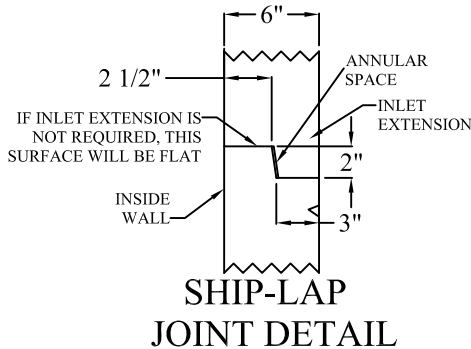


BASE SLAB REINFORCEMENT:
TWO LAYERS OF REINFORCING
A.S.T.M A615 0.20IN² /FT.
EACH WAY / EACH LAYER

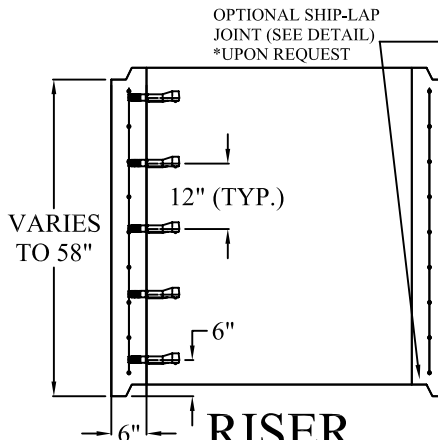
BASE
SECTION A-A



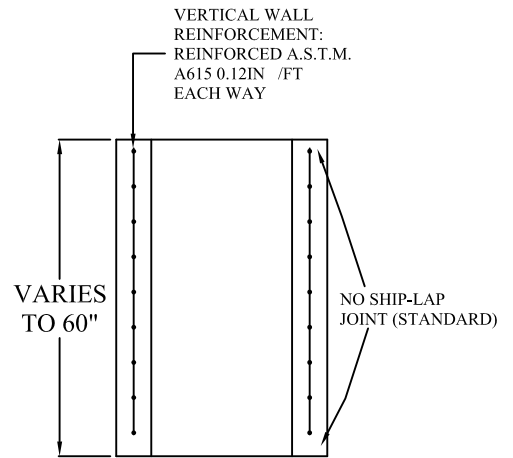
BASE
SECTION B-B



SHIP-LAP
JOINT DETAIL



RISER
SECTION A-A



RISER
SECTION B-B

SPECIFICATIONS:

MINIMUM CONCRETE STRENGTH 4000 PSI @ 28 DAYS
MATERIALS AND WORKMANSHIP IN ACCORDANCE WITH THE REQUIREMENTS
OF THE NEW JERSEY DEPARTMENT OF TRANSPORTATION
STEEL REINFORCEMENT A615 GRADE 60 HORIZONTAL AND VERTICAL



**Continental
Concrete
Products, Inc.**
1 South Grosstown Rd.
Pottstown, PA 19464
Phone: (610) 327-3700
Fax: (610) 327-9488

**NJDOT 24" X 45 1/4"
INLET BOX & RISER SECTION
(NJ TYPE A INLET)**

SIGNATURE OF APPROVAL

DATE | AR | DWG

STRUCTURE

2/08/16

NJ24X45IB