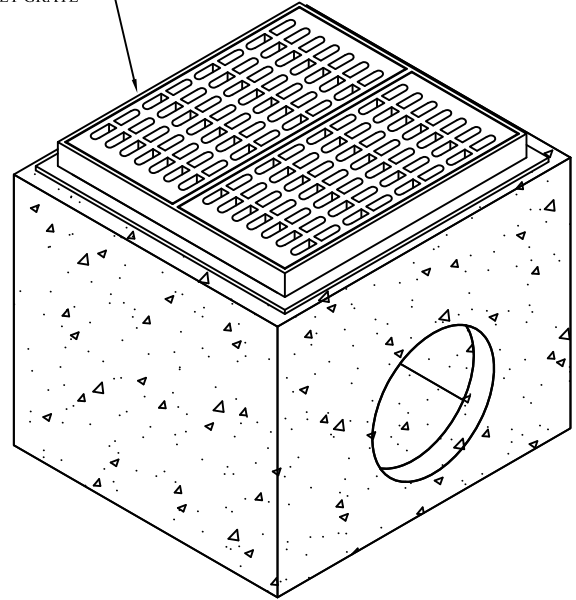
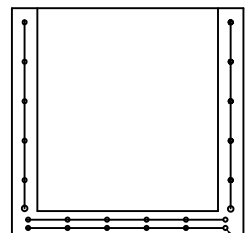
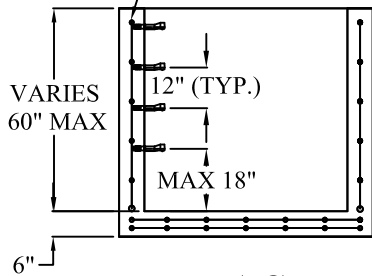


NEW JERSEY TYPE E
INLET GRATE



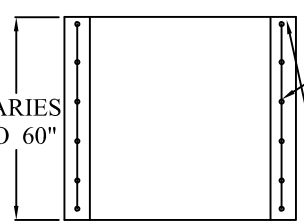
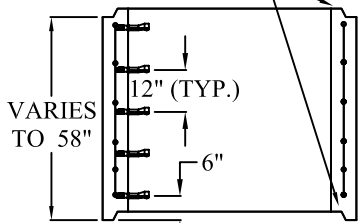
VERTICAL WALL REINFORCEMENT
REINFORCED A.S.T.M.
A615 0.12 IN²/FT EACH WAY



BASE SLAB REINFORCEMENT:
TWO LAYERS OF REINFORCEMENT A.S.T.M.
A615 0.20 IN²/FT EACH WAY; EACH LAYER

BASE SECTION A-A BASE SECTION B-B

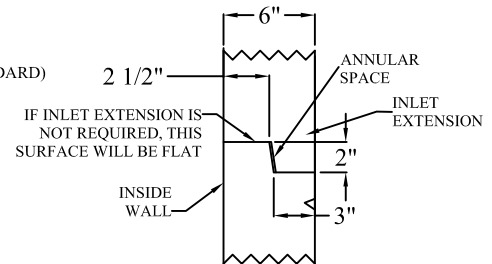
OPTIONAL SHIP-LAP
JOINT (SEE DETAIL)
*UPON REQUEST



VERTICAL WALL REINFORCEMENT
REINFORCED A.S.T.M.
A615 0.12 IN²/FT EACH WAY

RISER SECTION A-A RISER SECTION B-B

NO SHIP-LAP
JOINT (STANDARD)



SHIP-LAP JOINT DETAIL

SPECIFICATIONS:

MINIMUM CONCRETE STRENGTH 4000 PSI @ 28 DAYS
MATERIALS AND WORKMANSHIP IN ACCORDANCE WITH THE REQUIREMENTS
OF THE NEW JERSEY DEPARTMENT OF TRANSPORTATION
STEEL REINFORCEMENT A615 GRADE 60 HORIZONTAL AND VERTICAL

**Continental
Concrete
Products, Inc.**
1 South Grosstown Rd.
Pottstown, PA 19464
Phone: (610) 327-3700
Fax: (610) 327-9488

**NJDOT 42" X 48"
INLET BOX & RISER SECTION
(NJ STANDARD TYPE B & TYPE E INLET)**

SIGNATURE OF APPROVAL

DATE IAR DWG

STRUCTURE

2/08/16

NJ42X48IB