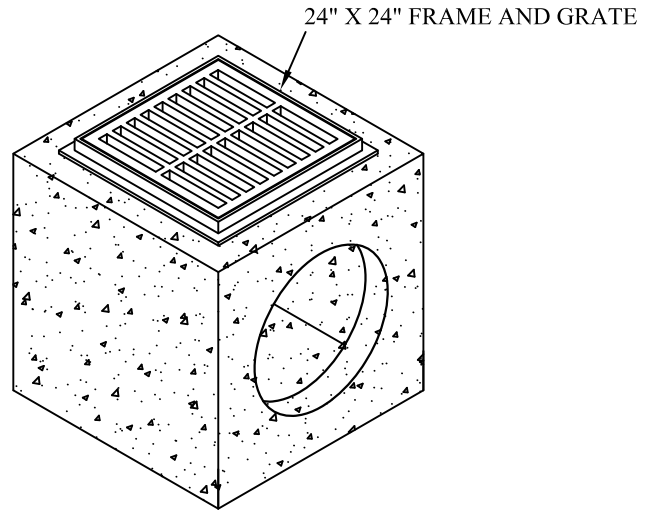
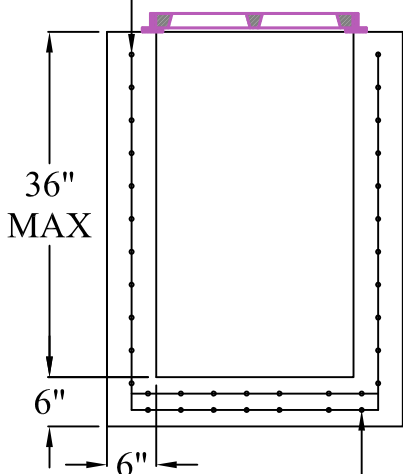


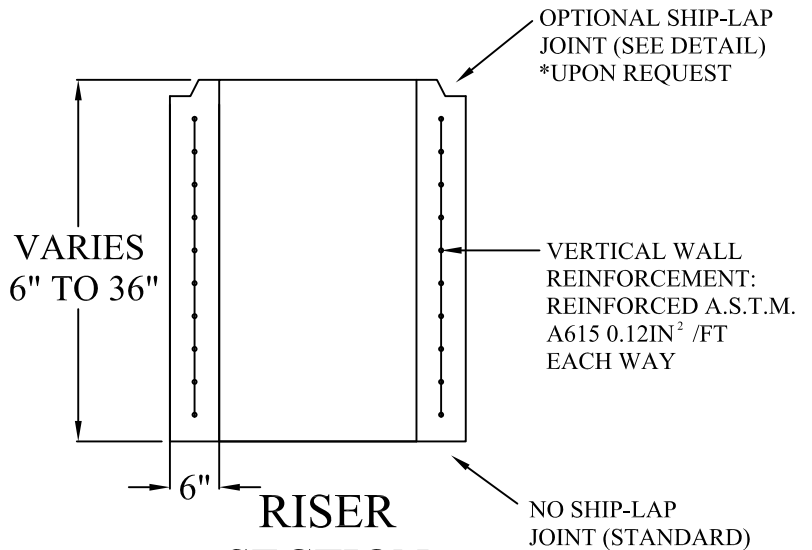
PLAN



VERTICAL WALL
REINFORCEMENT:
REINFORCED A.S.T.M.
A615 0.12IN² /FT
EACH WAY

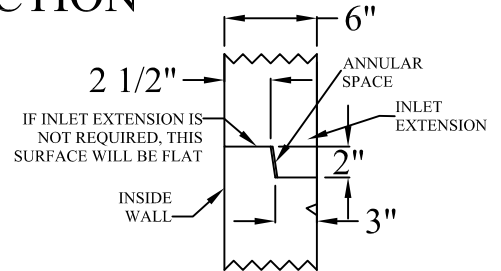


BASE
SECTION



RISER
SECTION

BASE SLAB REINFORCEMENT:
TWO LAYERS OF REINFORCING
A.S.T.M A615 0.20IN² /FT.
EACH WAY / EACH LAYER



SHIP-LAP
JOINT DETAIL

SPECIFICATIONS:

MINIMUM CONCRETE STRENGTH 4000 PSI @ 28 DAYS (PENNDOT CLASS AA)
MATERIALS AND WORKMANSHIP IN ACCORDANCE WITH THE REQUIREMENTS
OF PENNDOT PUBLICATION 408 SECTION 605 & 714
STEEL REINFORCEMENT A615 GRADE 60 HORIZONTAL AND VERTICAL



**Continental
Concrete
Products, Inc.**
1 South Grosstown Rd.
Pottstown, PA 19464
Phone: (610) 327-3700
Fax: (610) 327-9488

**24" X 24" INLET BOX & RISER SECTION
(24" X 24" YARD DRAIN)**

SIGNATURE OF APPROVAL

DATE

AR

DWG

STRUCTURE

2/08/16

24X24YD