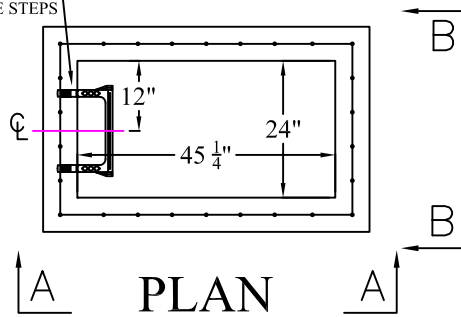
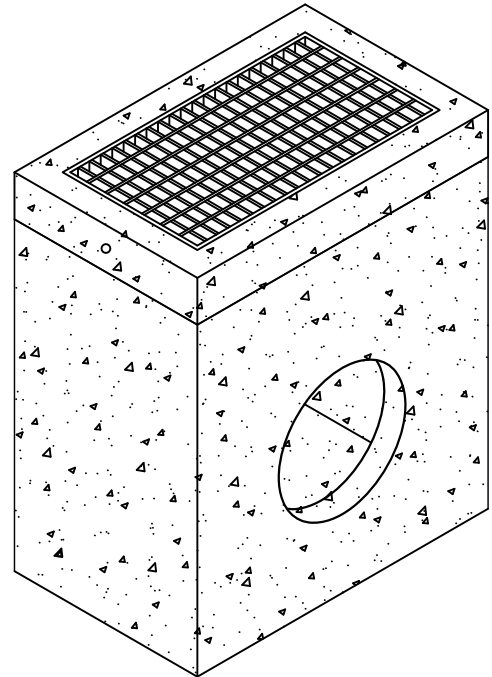


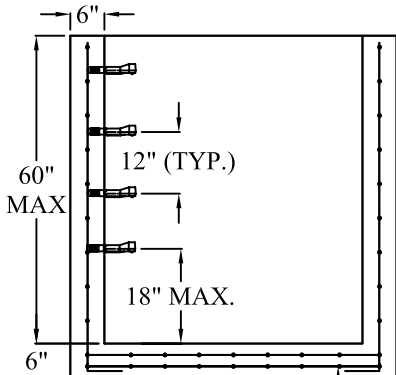
12" WIDE  
MANHOLE STEPS



PLAN

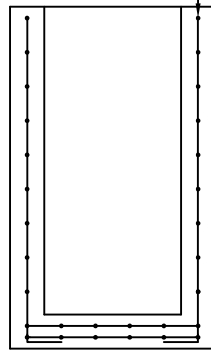


VERTICAL WALL  
REINFORCEMENT:  
REINFORCED A.S.T.M.  
A615 0.12IN<sup>2</sup> /FT  
EACH WAY

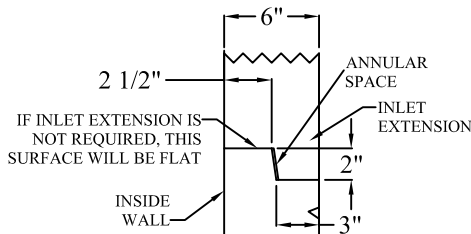


BASE SLAB REINFORCEMENT:  
TWO LAYERS OF REINFORCING  
A.S.T.M. A615 0.20IN<sup>2</sup> /FT.  
EACH WAY / EACH LAYER

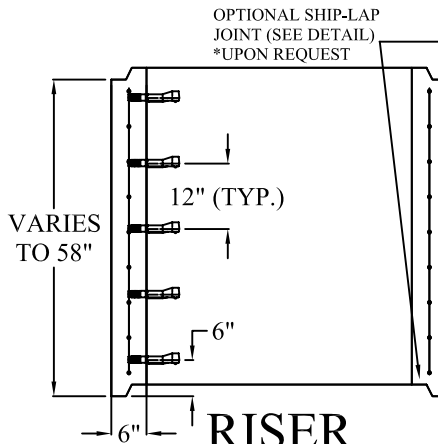
BASE  
SECTION A-A



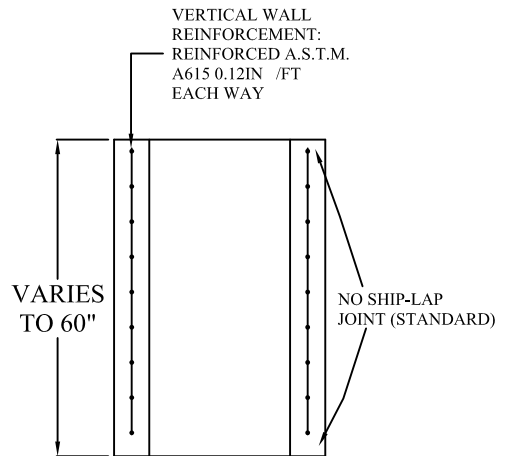
BASE  
SECTION B-B



SHIP-LAP  
JOINT DETAIL



RISER  
SECTION A-A



RISER  
SECTION B-B

**SPECIFICATIONS:**

MINIMUM CONCRETE STRENGTH 4000 PSI @ 28 DAYS (PENNDOT CLASS AA)  
MATERIALS AND WORKMANSHIP IN ACCORDANCE WITH THE REQUIREMENTS  
OF PENNDOT PUBLICATION 408 SECTION 605 & 714  
STEEL REINFORCEMENT A615 GRADE 60 HORIZONTAL AND VERTICAL



**Continental  
Concrete  
Products, Inc.**  
1 South Grosstown Rd.  
Pottstown, PA 19464  
Phone: (610) 327-3700  
Fax: (610) 327-9488

**PENNDOT 24" X 45 1/4"  
STANDARD INLET BOX & RISER SECTION**

SIGNATURE OF APPROVAL

DATE | AR | DWG

2/08/16

24X45IB

STRUCTURE