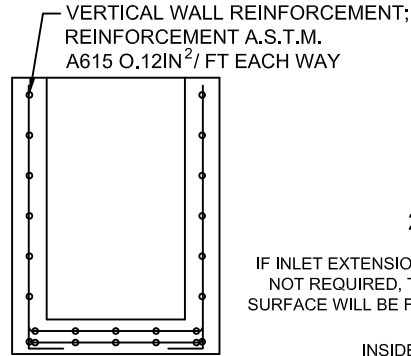
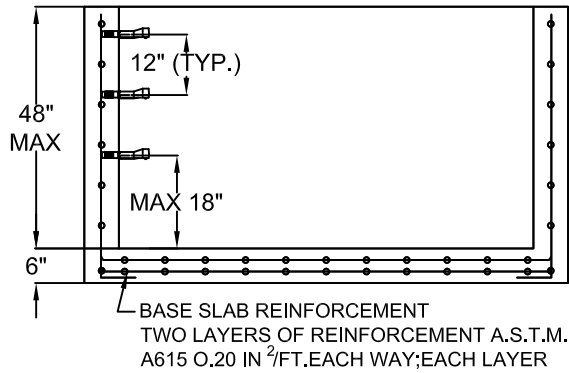
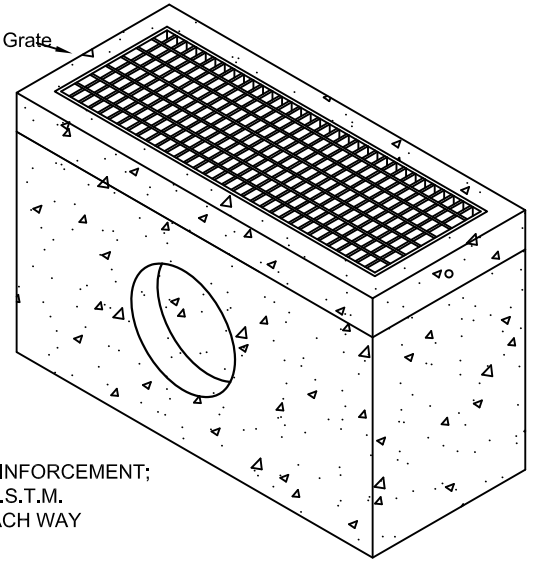
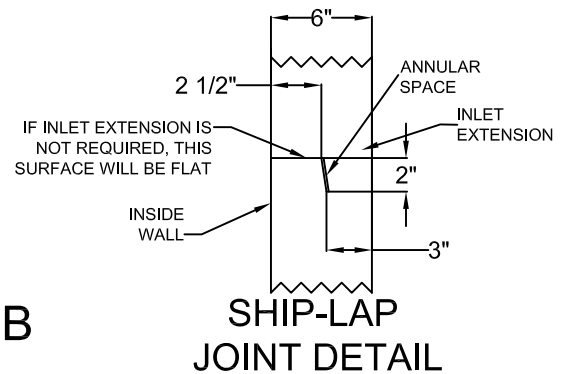


6' Type M-Top and 6' Grate



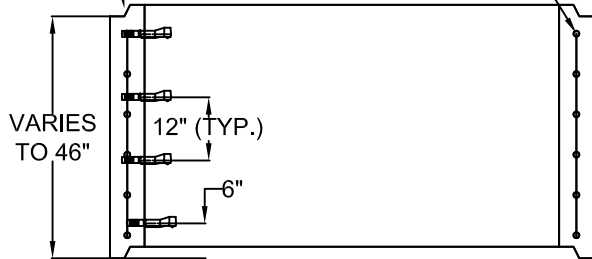
BASE SECTION B-B



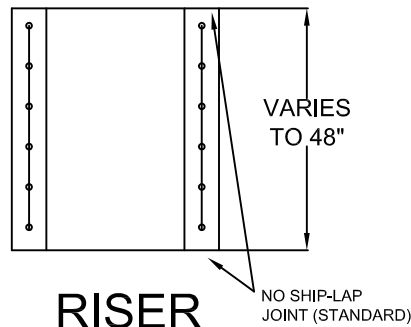
OPTIONAL SHIP-LAP JOINT (SEE DETAIL) *UPON REQUEST

BASE SECTION A-A

VERTICAL WALL REINFORCEMENT;
REINFORCEMENT A.S.T.M.
A615 O.12IN²/FT EACH WAY



RISER SECTION A-A



RISER SECTION B-B

SPECIFICATIONS:

MINIMUM CONCRETE STRENGTH 4000 PSI @ 28 DAYS (PENNDOT CLASS AA)
MATERIALS AND WORKMANSHIP IN ACCORDANCE WITH THE REQUIREMENTS OF PENNDOT PUBLICATION 408 SECTION 605 & 714
STEEL REINFORCEMENT A615 GRADE 60 HORIZONTAL AND VERTICAL

NOTE: 24" X 72" Inlet Box used for 6' Type C-Top & 6' Type M-Top



**Continental
Concrete
Products, Inc.**
1 South Grosstown Rd.
Pottstown, PA 19464
Phone: (610) 327-3700
Fax: (610) 327-9488

24" X 72" INLET BOX & RISER SECTION

SIGNATURE OF APPROVAL

DATE IAR DWG

2/08/16

24X72IB

STRUCTURE