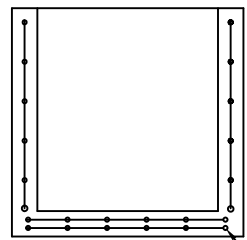
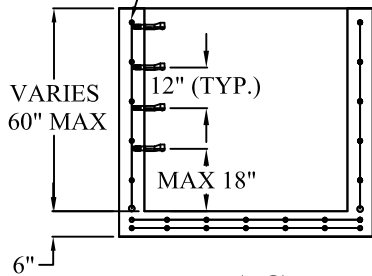


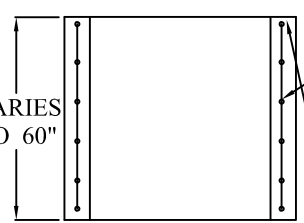
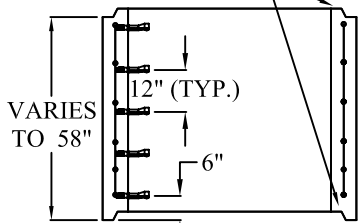
VERTICAL WALL REINFORCEMENT  
REINFORCED A.S.T.M.  
A615 0.12 IN<sup>2</sup>/FT EACH WAY



BASE SLAB REINFORCEMENT:  
TWO LAYERS OF REINFORCEMENT A.S.T.M.  
A615 0.20 IN<sup>2</sup>/FT EACH WAY; EACH LAYER

**BASE SECTION A-A      BASE SECTION B-B**

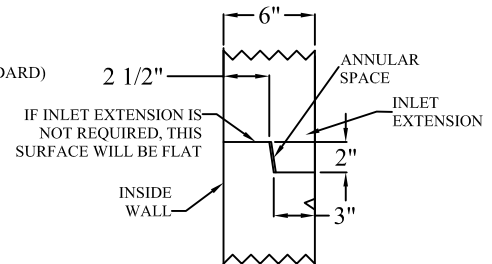
OPTIONAL SHIP-LAP  
JOINT (SEE DETAIL)  
\*UPON REQUEST



VERTICAL WALL REINFORCEMENT  
REINFORCED A.S.T.M.  
A615 0.12 IN<sup>2</sup>/FT EACH WAY

**RISER SECTION A-A      RISER SECTION B-B**

NO SHIP-LAP  
JOINT (STANDARD)



**SHIP-LAP JOINT DETAIL**

**SPECIFICATIONS:**

MINIMUM CONCRETE STRENGTH 4000 PSI @ 28 DAYS (PENNDOT CLASS AA)  
MATERIALS AND WORKMANSHIP IN ACCORDANCE WITH THE REQUIREMENTS  
OF PENNDOT PUBLICATION 408 SECTION 605 & 714  
STEEL REINFORCEMENT A615 GRADE 60 HORIZONTAL AND VERTICAL

**PENNDOT 42" X 48"  
INLET BOX & RISER SECTION  
(TYPE 4)**

SIGNATURE OF APPROVAL

DATE | AR | DWG

STRUCTURE

2/08/16

**42X48IB**