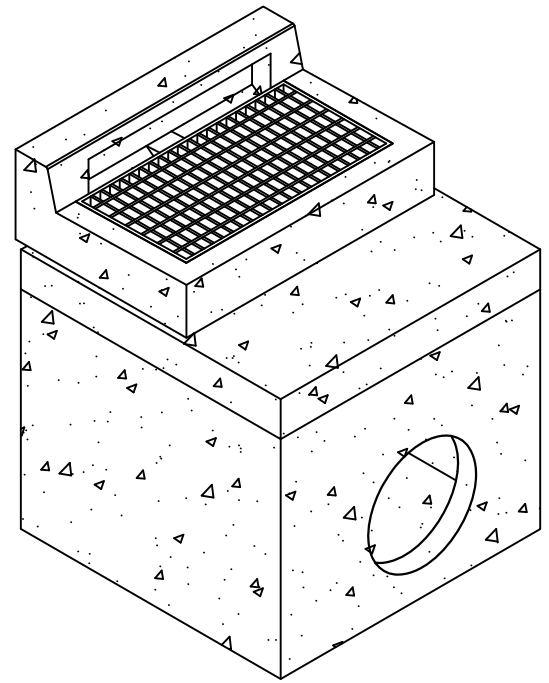
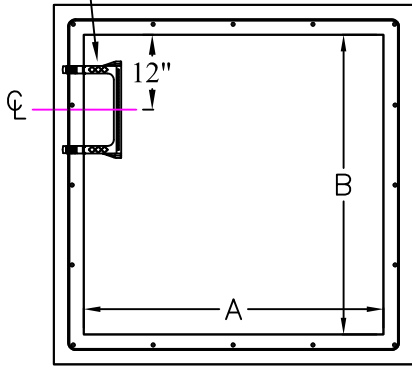


BOX SIZE	(A)	(B)	(C)	(D)	(E)	(F)	MAX WEIGHT
48"X48" TYPE 4	48"	48"	MAX 72"	MAX 70"	6"	6"	5 TONS
60"X60" TYPE 5	60"	60"	MAX 72"	MAX 70"	6"	6"	6 TONS
72"X72" TYPE 6	72"	72"	MAX 96"	MAX 94"	6"	8"	9 TONS

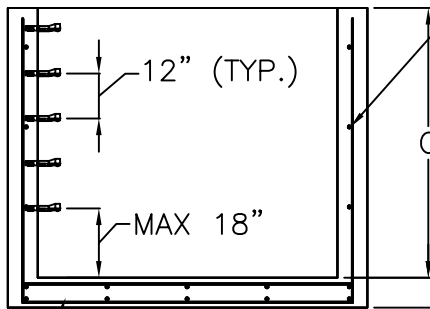


12" WIDE
MANHOLE STEPS



PLAN

NO SHIP-LAP
JOINT (STANDARD)

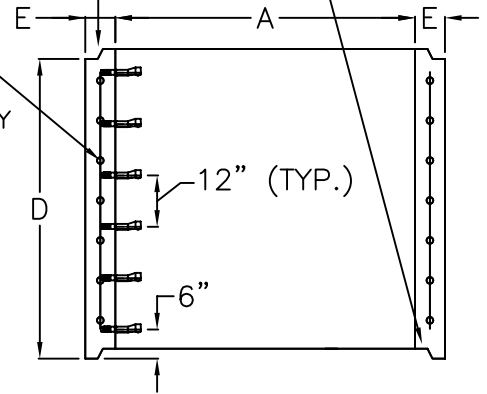


BASE SECTION

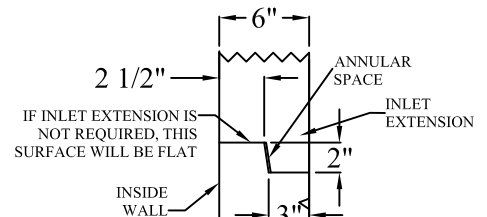
FLOOR REINFORCEMENT:
MIN 0.20 IN²/FT. EACH WAY
EACH LAYER

WALL REINFORCEMENT:
(48" X 48" BOX)
MIN 0.12 IN²/FT EACH WAY
(60" X 60" & 72" X 72")
MIN 0.20 IN²/FT

OPTIONAL SHIP-LAP
JOINT (SEE DETAIL)
*UPON REQUEST



RISER SECTION



SHIP-LAP
JOINT DETAIL

SPECIFICATIONS:

MINIMUM CONCRETE STRENGTH 4000 PSI @ 28 DAYS (PENNDOT CLASS AA)
MATERIALS AND WORKMANSHIP IN ACCORDANCE WITH THE REQUIREMENTS
OF PENNDOT PUBLICATION 408 SECTION 605 & 714
STEEL REINFORCEMENT A615 GRADE 60 HORIZONTAL AND VERTICAL

**Continental
Concrete
Products, Inc.**
1 South Grosstown Rd.
Pottstown, PA 19464
Phone: (610) 327-3700
Fax: (610) 327-9488

**48" X 48", 60" X 60" & 72" X 72"
INLET BOX & RISER SECTION
(MODIFIED INLET BOX FOR LARGE PIPE)**

SIGNATURE OF APPROVAL

DATE

AR

DWG

STRUCTURE

2/08/16

4X4-6X6IB