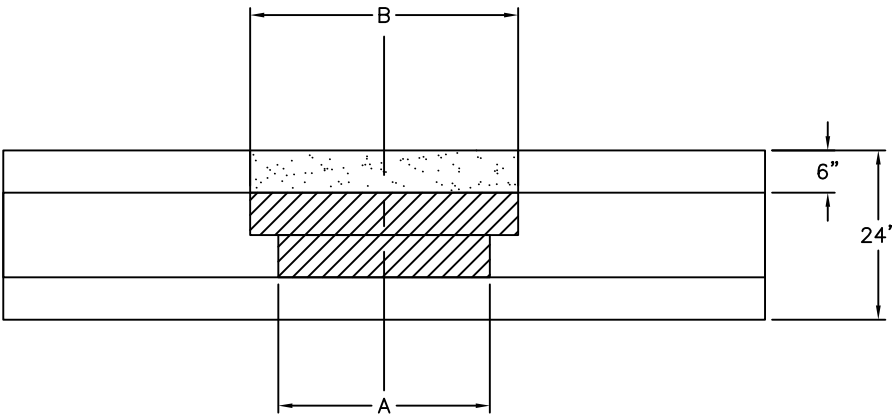
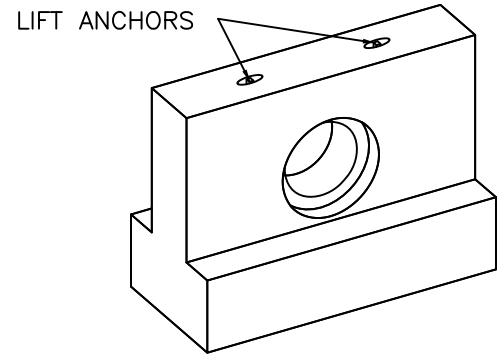
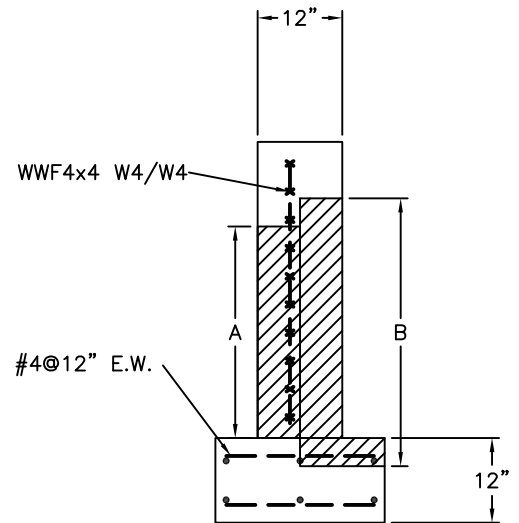
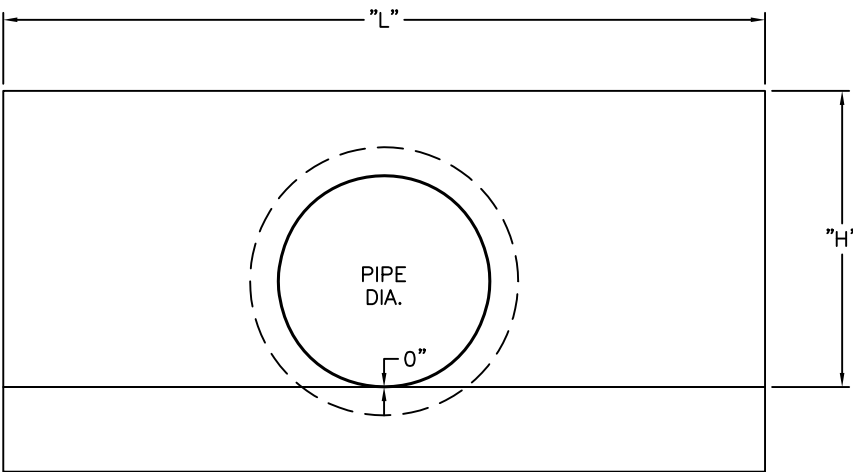


PIPE ϕ	'H'	'L'	MAX. WEIGHT
12	30"	60"	1.75 TONS
15	30"	60"	1.50 TONS
18	30"	60"	1.50 TONS
21	30"	60"	1.50 TONS
24	38"	84"	2.00 TONS
27	38"	84"	2.00 TONS
30	42"	108"	3.00 TONS
33	48"	108"	3.50 TONS
36	48"	108"	3.50 TONS



PIPE SIZE	A	B
12" ϕ	12" ϕ	19" ϕ
15" ϕ	15" ϕ	22" ϕ
18" ϕ	18" ϕ	25" ϕ
21" ϕ	21" ϕ	29" ϕ
24" ϕ	24" ϕ	33" ϕ
27" ϕ	27" ϕ	36" ϕ
30" ϕ	30" ϕ	40" ϕ
33" ϕ	33" ϕ	44" ϕ
36" ϕ	36" ϕ	48" ϕ



SPECIFICATIONS:

- MINIMUM CONCRETE STRENGTH 4000 PSI @ 28 DAYS (PENNDOT CLASS AA)
- D ENDWALL DESIGNED AS PER PENNDOT SPECIFICATION
- EXPOSED EDGES TO HAVE 1" X 1" CHAMFER
- MATERIALS AND WORKMANSHIP IN ACCORDANCE WITH THE REQUIREMENTS OF PENNDOT PUBLICATION 408 SECTION 605 & 714
- STEEL REINFORCEMENT A615 GRADE 60 HORIZONTAL AND VERTICAL

**Continental
Concrete
Products, Inc.**
1 South Grosstown Rd.
Pottstown, PA 19464
Phone: (610) 327-3700
Fax: (610) 327-9488

PENNDOT TYPE "D" ENDWALL

SIGNATURE OF APPROVAL

DATE | AR | DWG

STRUCTURE

2/08/16

D EW