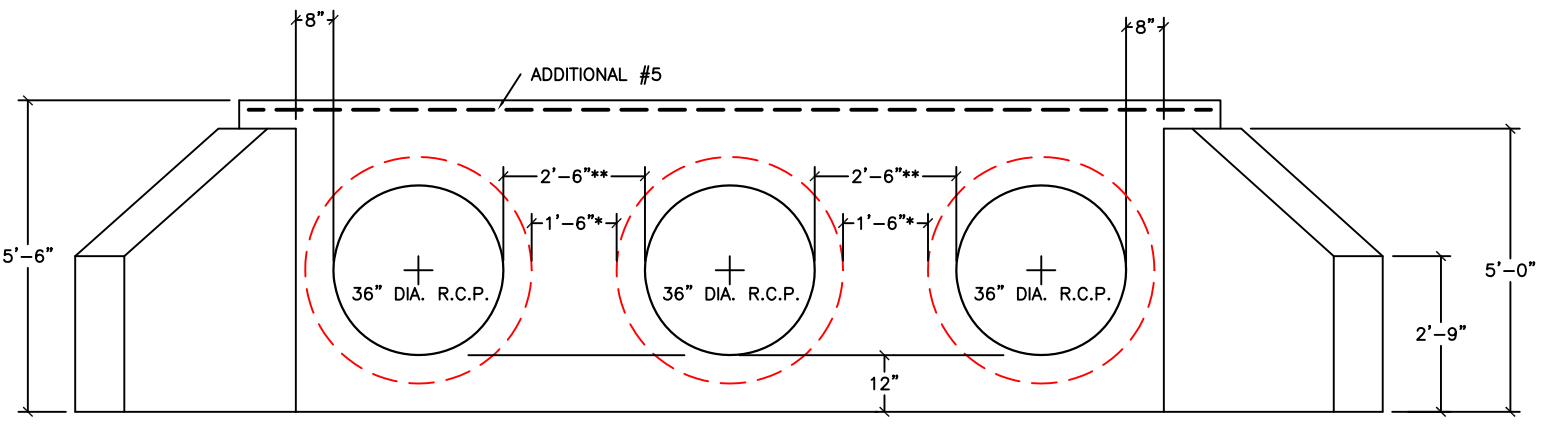
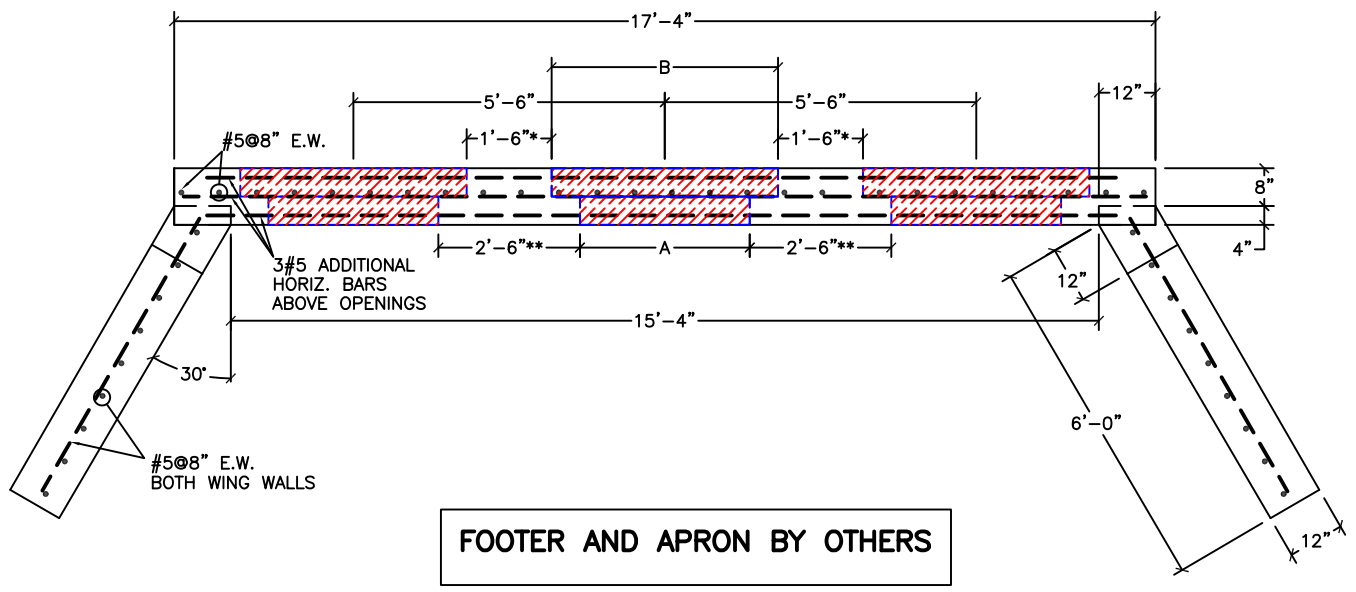


PIPE SIZE	A	B
36" ϕ	36" ϕ	48" ϕ



MAXIMUM SECTION WEIGHT 5.0 TONS

SPECIFICATIONS:

- MINIMUM CONCRETE STRENGTH 4000 PSI @ 28 DAYS (PENNDOT CLASS AA)
- DW ENDWALL DESIGNED AS PER PENNDOT SPECIFICATION
- EXPOSED EDGES TO HAVE 1" X 1" CHAMFER
- MATERIALS AND WORKMANSHIP IN ACCORDANCE WITH THE REQUIREMENT OF PENNDOT PUBLICATION 408 SECTION 605 & 714
- STEEL REINFORCEMENT A615 GRADE 60 HORIZONTAL AND VERTICAL

*MINIMUM SPACE FOR BACKFILLING BETWEEN PIPES
 **SPACING BETWEEN PIPE OPENINGS AT THE FACE OF THE ENDWALL

Continental Concrete Products, Inc.
 1 South Grosstown Rd.
 Pottstown, PA 19464
 Phone: (610) 327-3700
 Fax: (610) 327-9488

TYPE 'DW' ENDWALL FOR TRIPLE 36" RCP (3 SECTION DESIGN)			
SIGNATURE OF APPROVAL	DATE	AR	DWG
	2/08/16		36DWEW
			STRUCTURE