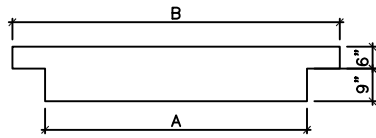
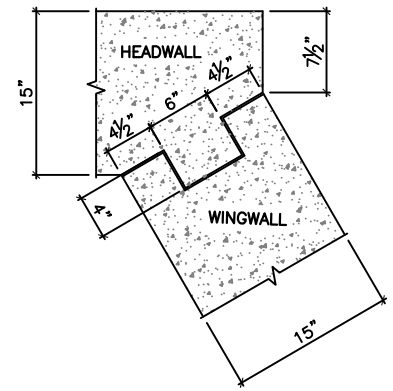


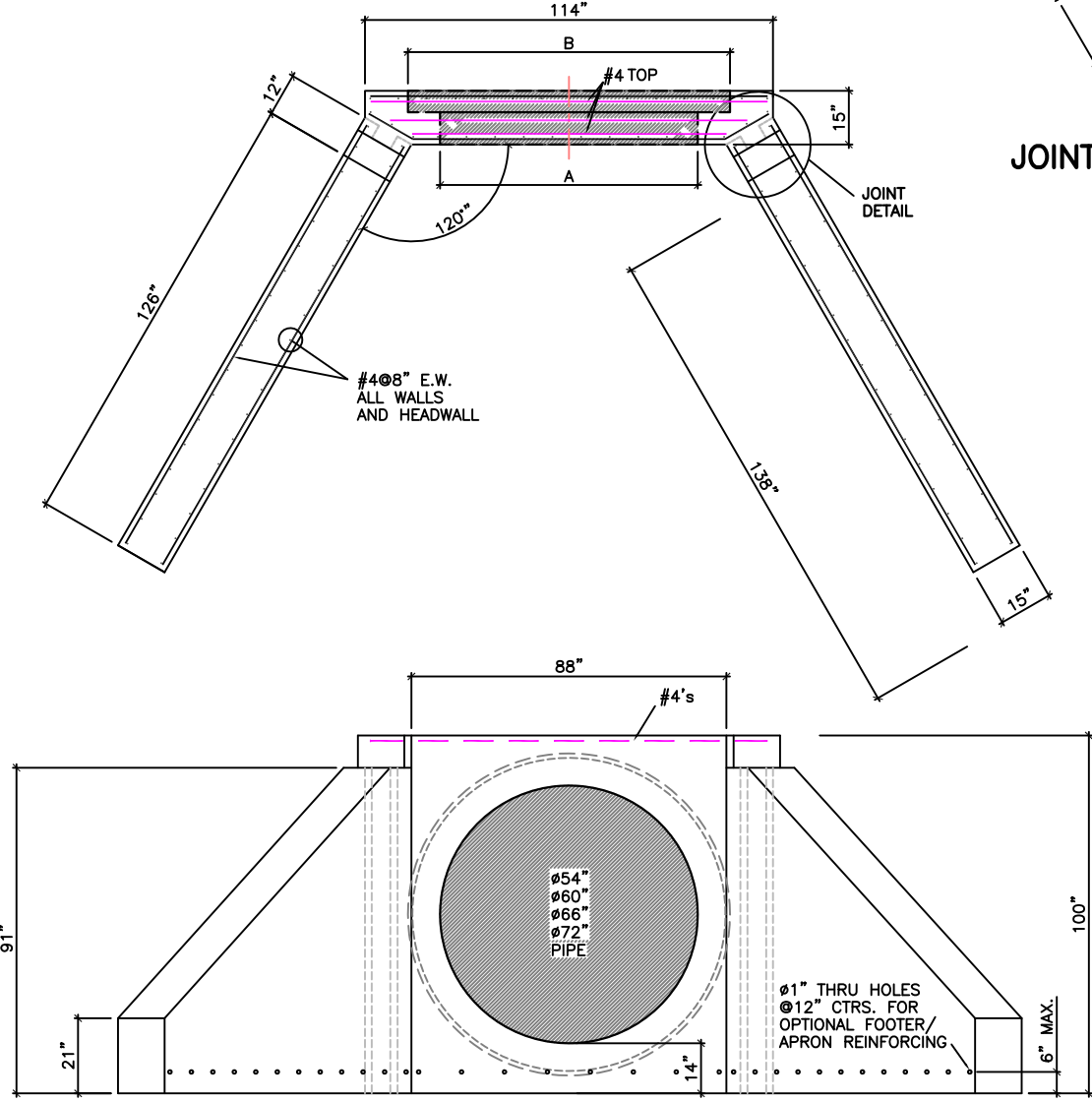
PIPE SIZE	A	B
54" $\phi$	54" $\phi$	68" $\phi$
60" $\phi$	60" $\phi$	76" $\phi$
66" $\phi$	66" $\phi$	83" $\phi$
72" $\phi$	72" $\phi$	90" $\phi$



HOLE FORMER DETAIL



JOINT DETAIL



MAXIMUM SECTION WEIGHT 5.0 TONS

**SPECIFICATIONS:**

- MINIMUM CONCRETE STRENGTH 4000 PSI @ 28 DAYS (PENNDOT CLASS AA)
- DW ENDWALL DESIGNED AS PER PENNDOT SPECIFICATION
- EXPOSED EDGES TO HAVE 1" X 1" CHAMFER
- MATERIALS AND WORKMANSHIP IN ACCORDANCE WITH THE REQUIREMENTS OF PENNDOT PUBLICATION 408 SECTION 605 & 714
- STEEL REINFORCEMENT A615 GRADE 60 HORIZONTAL AND VERTICAL

$\phi$ 1" THRU HOLES FOR OPTIONAL FOOTER/APRON TO BE ADDED UPON CONTRACTORS REQUEST  
 OPTIONAL FOOTER/APRON TO BE FIELD CONSTRUCTED BY CONTRACTOR.

**Continental Concrete Products, Inc.**  
 1 South Grosstown Rd.  
 Pottstown, PA 19464  
 Phone: (610) 327-3700  
 Fax: (610) 327-9488

**DW ENDWALL FOR LARGE DIAMETER PIPE  
 (3-PIECE DESIGN FOR 54"  $\phi$  TO 72"  $\phi$  PIPE)**

SIGNATURE OF APPROVAL	DATE	AR	DWG	STRUCTURE
	2/08/16		DWLDP	