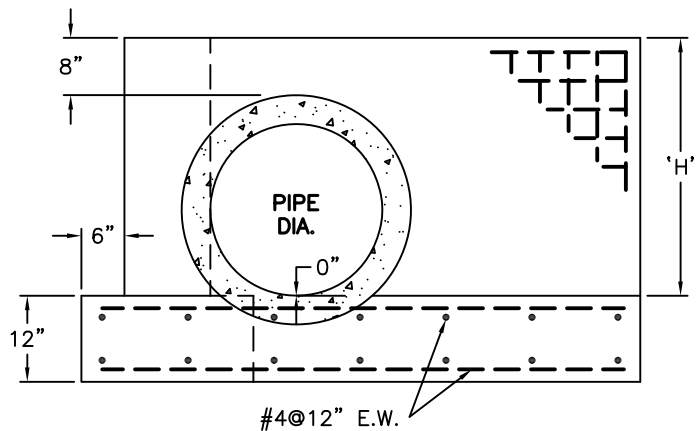
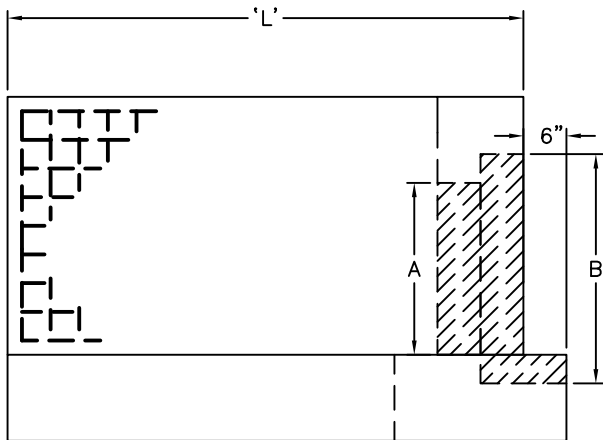
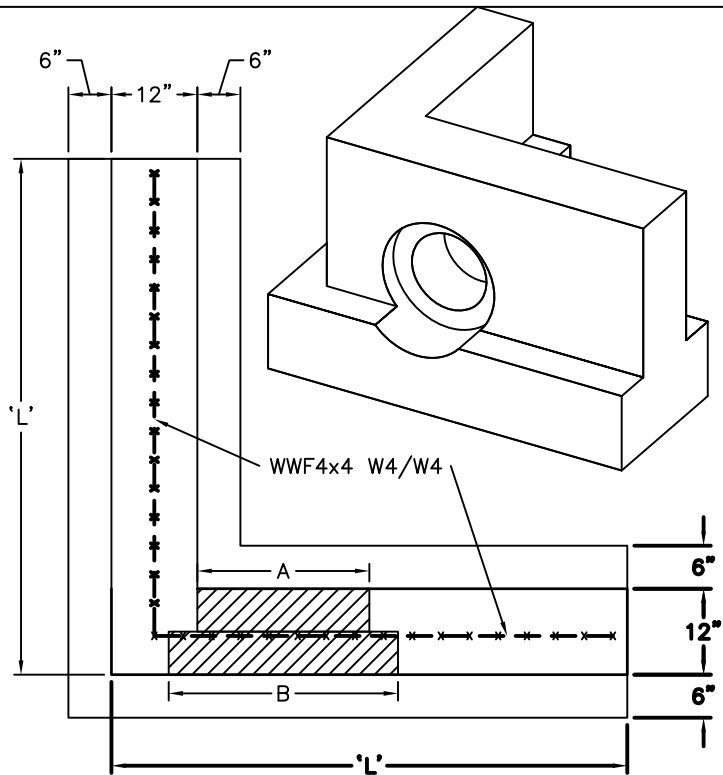


PIPE $\phi$	'L'	'H'	MAX. WEIGHT
12"	42"	24"	1.75 TONS
15"	54"	24"	2.25 TONS
18"	60"	30"	3.00 TONS
21"	66"	30"	3.00 TONS
24"	72"	36"	4.00 TONS
27"	84"	36"	4.00 TONS
30"	90"	42"	5.00 TONS
36"	102"	48"	6.50 TONS

PIPE SIZE	A	B
12" $\phi$	12" $\phi$	19" $\phi$
15" $\phi$	15" $\phi$	22" $\phi$
18" $\phi$	18" $\phi$	25" $\phi$
21" $\phi$	21" $\phi$	29" $\phi$
24" $\phi$	24" $\phi$	33" $\phi$
27" $\phi$	27" $\phi$	36" $\phi$
30" $\phi$	30" $\phi$	40" $\phi$
36" $\phi$	36" $\phi$	48" $\phi$



### SPECIFICATIONS:

- MINIMUM CONCRETE STRENGTH 4000 PSI @ 28 DAYS (PENNDOT CLASS AA)
- ES ENDWALL DESIGNED AS PER PENNDOT SPECIFICATION
- EXPOSED EDGES TO HAVE 1" X 1" CHAMFER
- MATERIALS AND WORKMANSHIP IN ACCORDANCE WITH THE REQUIREMENTS OF PENNDOT PUBLICATION 408 SECTION 605 & 714
- STEEL REINFORCEMENT A615 GRADE 60 HORIZONTAL AND VERTICAL



**Continental  
Concrete  
Products, Inc.**  
1 South Grosstown Rd.  
Pottstown, PA 19464  
Phone: (610) 327-3700  
Fax: (610) 327-9488

## PENNDOT TYPE 'ES' ENDWALL

SIGNATURE OF APPROVAL

DATE

AR

DWG

STRUCTURE

2/08/16

ES EW