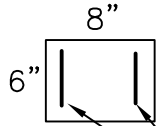
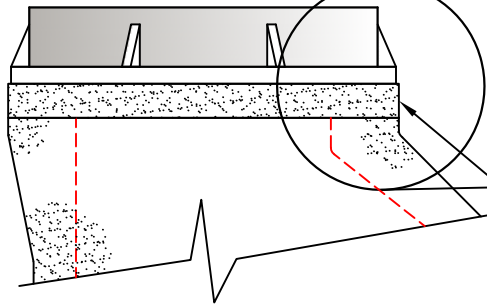


GALVANIZED NUTS AND BOLTS
TO SECURE FRAME & COVER
(TO BE SUPPLIED BY CONTRACTOR)



WWF3x12 W3/W2.5

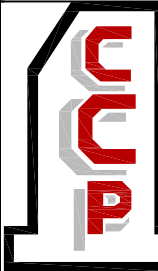
SECTION



GRADE ADJUSTMENT
RINGS AVAILABLE IN
4" OR 6" INCREMENTS
(CONTRACTOR TO ADJUST
TO GRADE AS REQUIRED)

SPECIFICATIONS:

MATERIAL AND CONSTRUCTION SHALL COMPLY WITH PENNDOT PUB. 408
PENNDOT CLASS AA CONCRETE 4000 PSI @ 28 DAYS
REINFORCEMENT~ ASTM A615 GRADE 60, MIN. 1 1/2" COVER.
MEETS H-25 LOAD REQUIREMENTS



**Continental
Concrete
Products, Inc.**
1 South Grosstown Rd.
Pottstown, PA 19464
Phone: (610) 327-3700
Fax: (610) 327-9488

MANHOLE GRADE ADJUSTMENT RINGS

SIGNATURE OF APPROVAL

DATE | AR | DWG

STRUCTURE

2/08/16

GRADERING