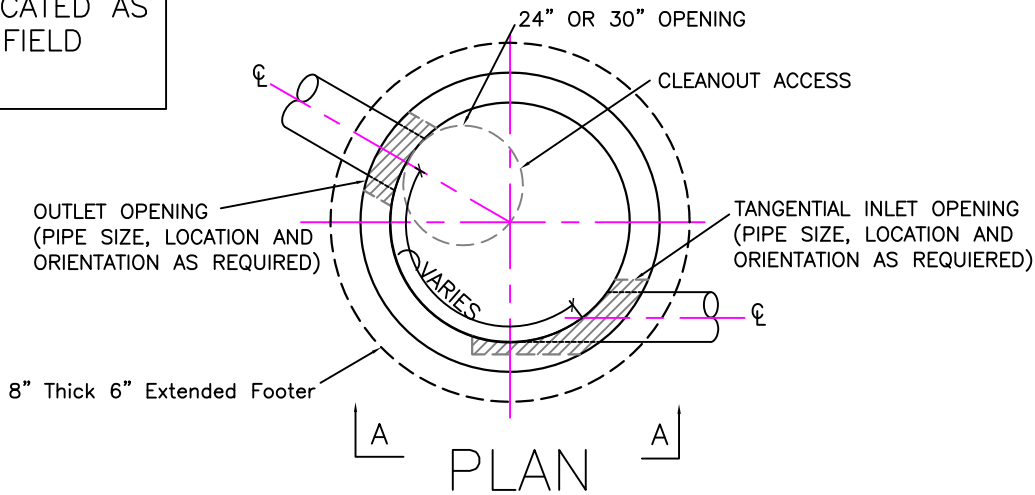


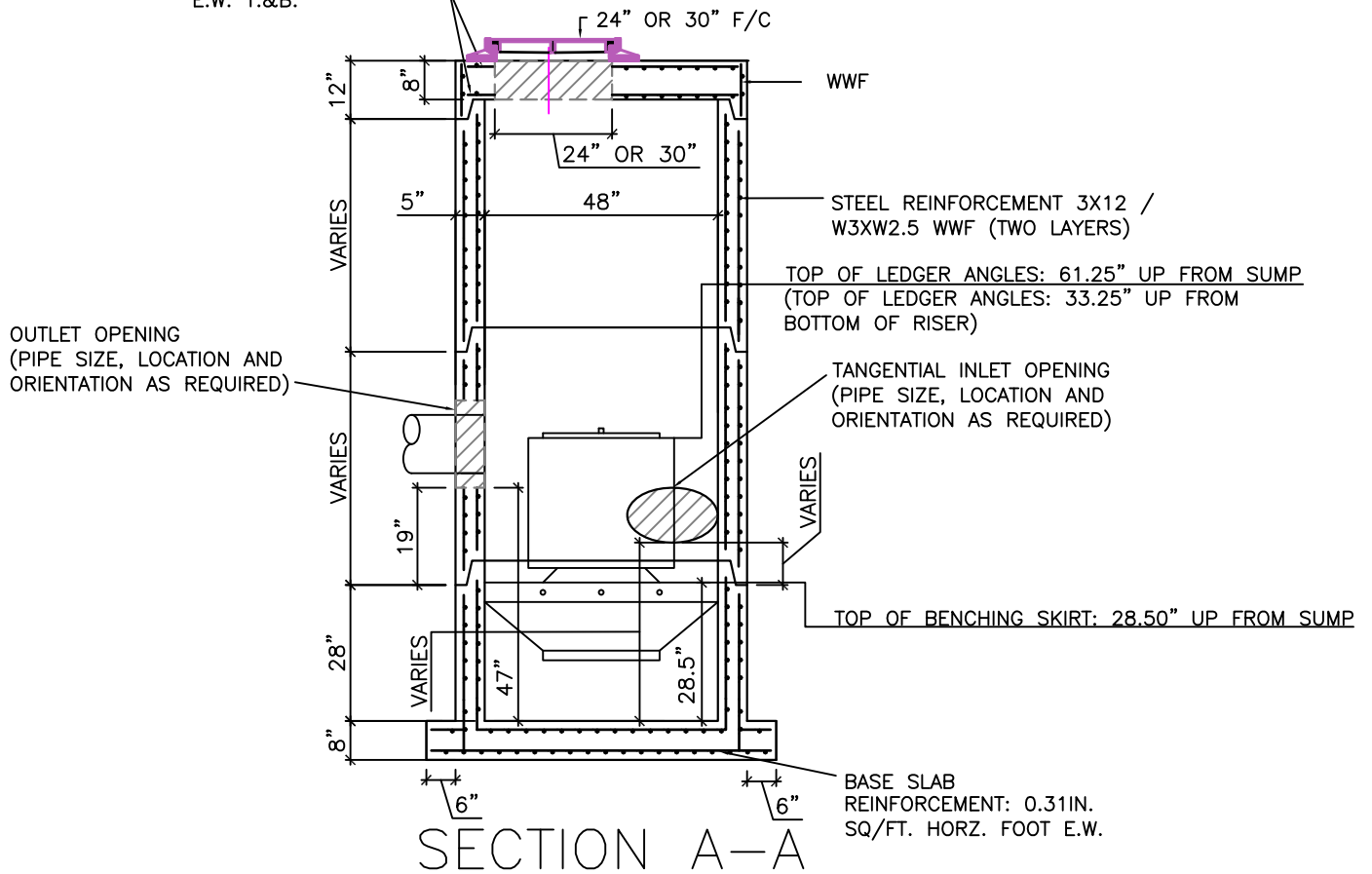
MAX SECTION WEIGHT: 3 TONS

INTERNAL PARTS TO BE INSTALLED BY CCP BEFORE DELIVERY.

PIPE OPENINGS TO BE SIZED AND LOCATED AS REQUIRED BY FIELD CONDITIONS.

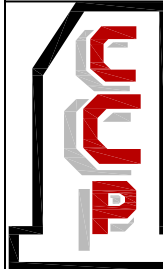


STEEL REINFORCEMENT:
#6 BARS @ 8" C. TO C.
E.W. T.&B.



SPECIFICATIONS:

MINIMUM CONCRETE STRENGTH 4000 PSI @ 28 DAYS
MATERIALS AND WORKMANSHIP IN ACCORDANCE WITH THE REQUIREMENTS OF NEW JERSEY AND NEW YORK DEPARTMENTS OF TRANSPORTATION
STEEL REINFORCEMENT A615 GRADE 60 HORIZONTAL AND VERTICAL



**Continental
Concrete
Products, Inc.**
1 South Grosstown Rd.
Pottstown, PA 19464
Phone: (610) 327-3700
Fax: (610) 327-9488

**HYDRO INTERNATIONAL
48" DIA. DOWNSTREAM DEFENDER™ MANHOLE**

SIGNATURE OF APPROVAL

DATE

AR

DWG

STRUCTURE

2/08/16

48DDFMH