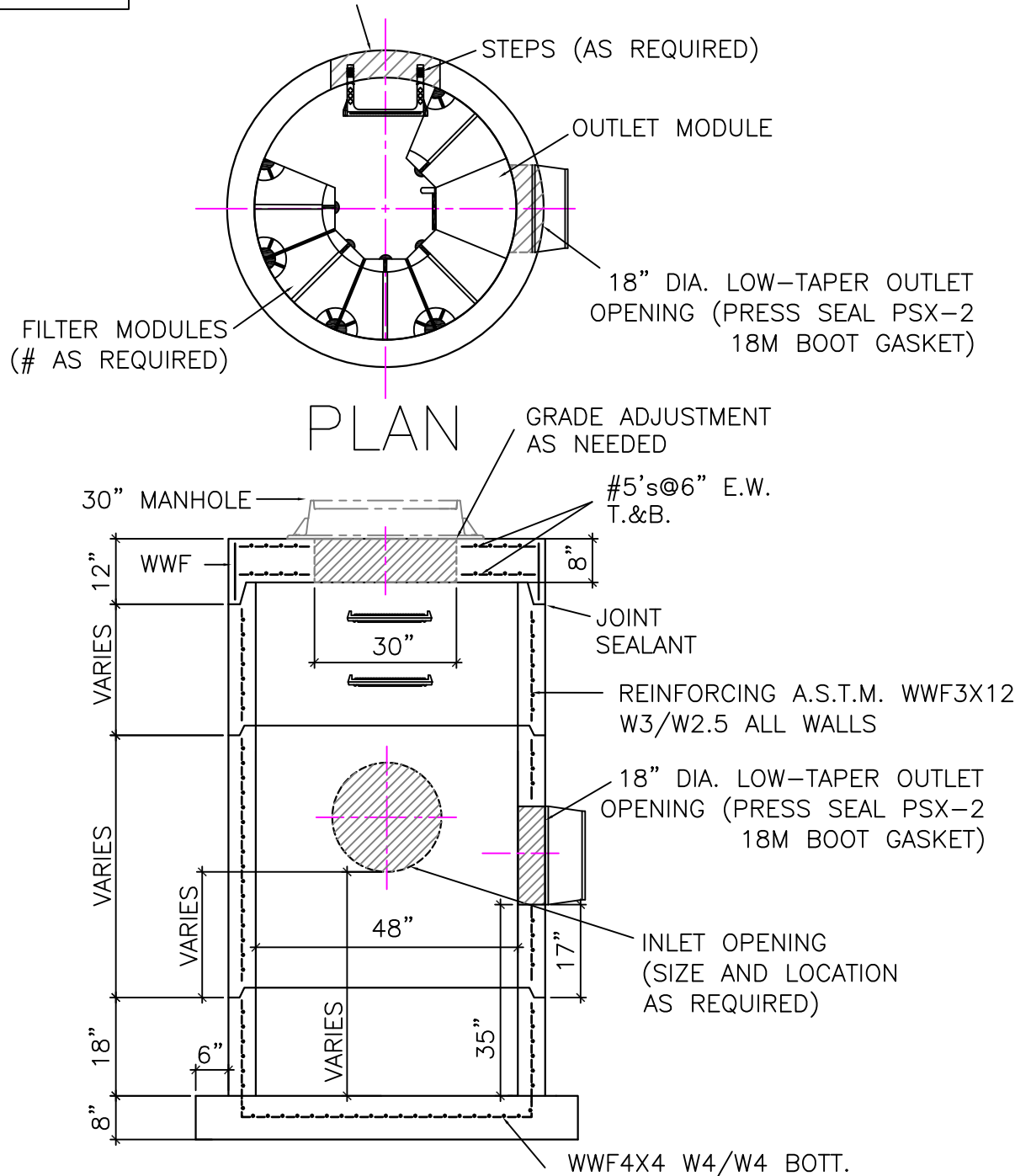


OPENINGS TO BE SIZED AND LOCATED AS REQUIRED BY FIELD CONDITIONS.

INLET OPENING (SIZE AND LOCATION AS REQUIRED)

MODULES TO BE INSTALLED BY CCP BEFORE DELIVERY.



SECTION

SPECIFICATIONS:

MINIMUM CONCRETE STRENGTH 4000 PSI @ 28 DAYS
 MATERIALS AND WORKMANSHIP IN ACCORDANCE WITH THE REQUIREMENTS OF NEW JERSEY AND NEW YORK DEPARTMENTS OF TRANSPORTATION
 STEEL REINFORCEMENT A615 GRADE 60 HORIZONTAL AND VERTICAL



**Continental
Concrete
Products, Inc.**
 1 South Grosstown Rd.
 Pottstown, PA 19464
 Phone: (610) 327-3700
 Fax: (610) 327-9488

HYDRO INTERNATIONAL
 48" DIA. UP-FLO FILTER™ (UFF) MANHOLE

SIGNATURE OF APPROVAL	DATE	AR	DWG	STRUCTURE
	2/08/16		48UFFMH	