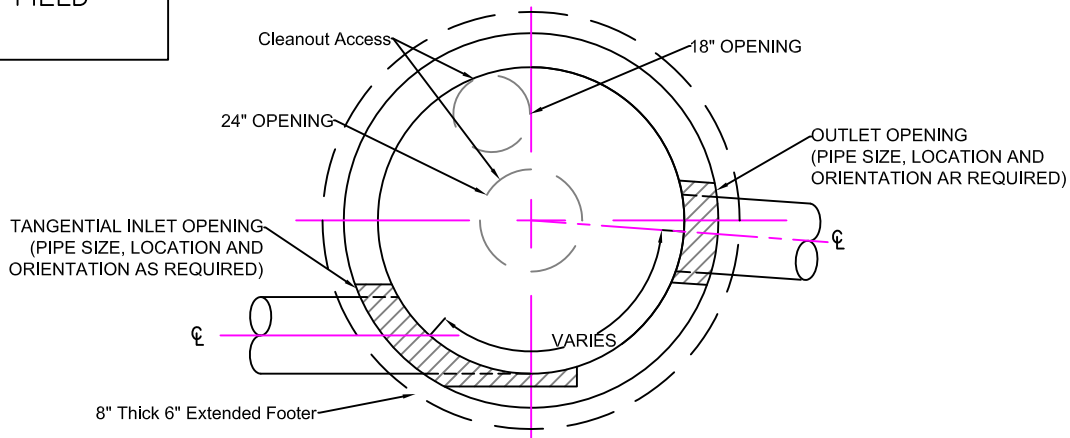


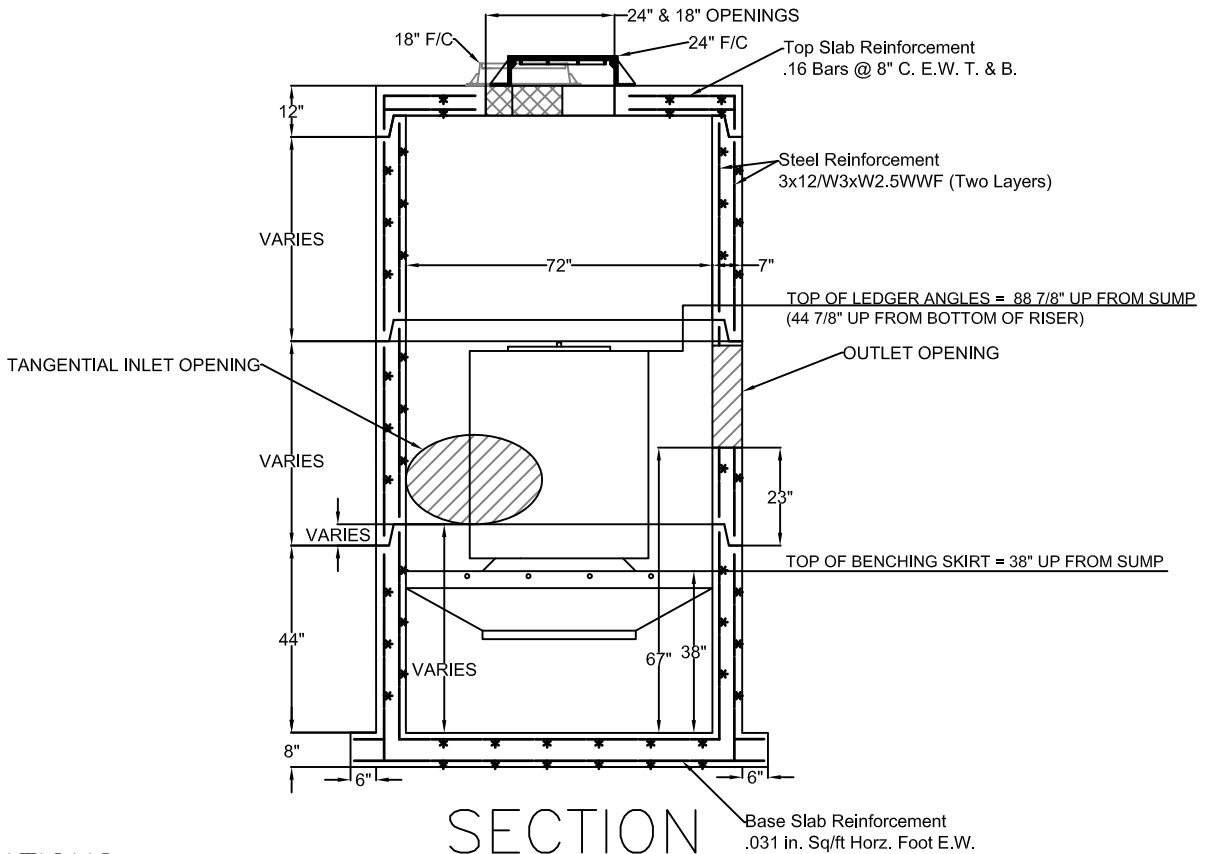
MAX SECTION WEIGHT: 6.5 TONS

INTERNAL PARTS TO BE INSTALLED BY CCP BEFORE DELIVERY.

PIPE OPENINGS TO BE SIZED AND LOCATED AS REQUIRED BY FIELD CONDITIONS.



PLAN



SECTION

SPECIFICATIONS:

MINIMUM CONCRETE STRENGTH 4000 PSI @ 28 DAYS
 MATERIALS AND WORKMANSHIP IN ACCORDANCE WITH THE REQUIREMENTS OF NEW JERSEY AND NEW YORK DEPARTMENTS OF TRANSPORTATION
 STEEL REINFORCEMENT A615 GRADE 60 HORIZONTAL AND VERTICAL



**Continental
Concrete
Products, Inc.**
 1 South Grosstown Rd.
 Pottstown, PA 19464
 Phone: (610) 327-3700
 Fax: (610) 327-9488

HYDRO INTERNATIONAL
 72" DIA. DOWNSTREAM DEFENDER™ MANHOLE

SIGNATURE OF APPROVAL

DATE

AR

DWG

STRUCTURE

2/08/16

72DDFMH