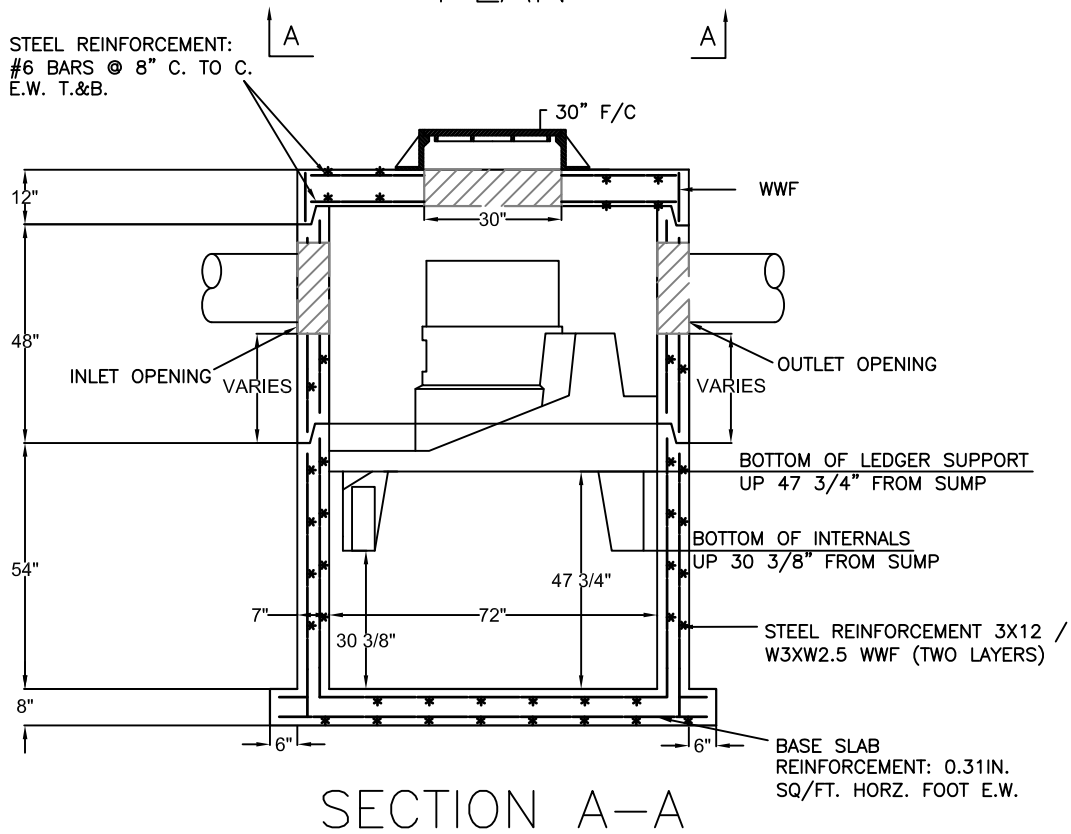
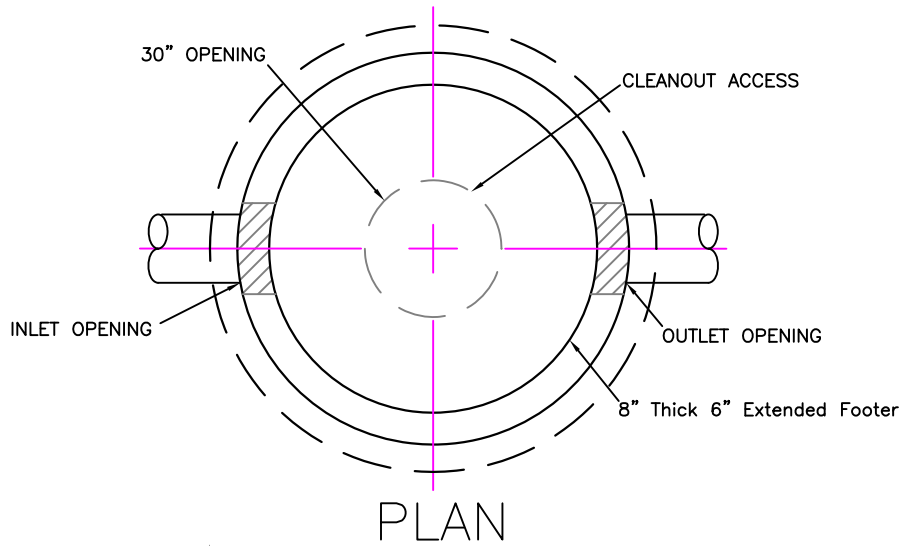


MAX SECTION WEIGHT: 7 TONS

CONTACT CCP FOR SITE SPECIFIC DRAWINGS.

PIPE SIZES & INVERT LOCATIONS AS REQUIRED BY FIELD CONDITIONS.



**SPECIFICATIONS:**

MINIMUM CONCRETE STRENGTH 4000 PSI @ 28 DAYS  
MATERIALS AND WORKMANSHIP IN ACCORDANCE WITH THE REQUIREMENTS  
OF NEW JERSEY AND NEW YORK DEPARTMENTS OF TRANSPORTATION  
STEEL REINFORCEMENT A615 GRADE 60 HORIZONTAL AND VERTICAL



**Continental  
Concrete  
Products, Inc.**

1 South Grosstown Rd.  
Pottstown, PA 19464  
Phone: (610) 327-3700  
Fax: (610) 327-9488

**HYDRO INTERNATIONAL  
72" DIA. FIRST DEFENSE™ HC MANHOLE**

SIGNATURE OF APPROVAL

DATE

AR

DWG

STRUCTURE

2/08/16

72FDHCMH