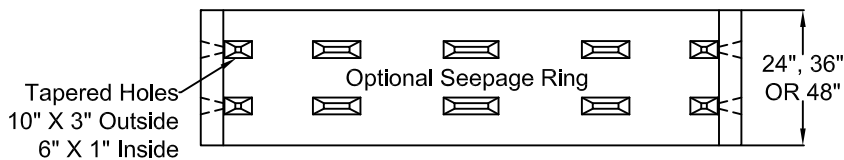
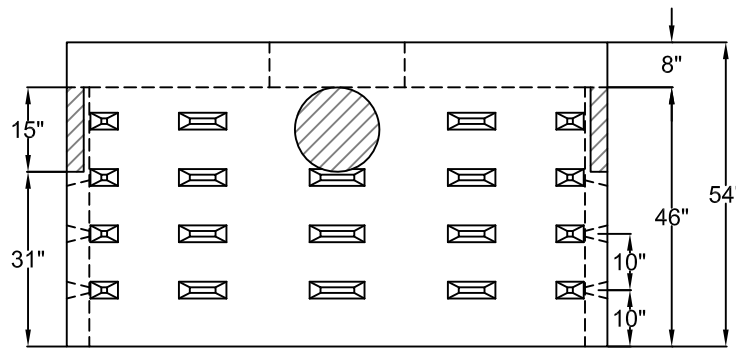


PLAN VIEW



SECTION VIEWS

SPECIFICATIONS:

MINIMUM CONCRETE STRENGTH 4000 PSI @ 28 DAYS (PENNDOT CLASS AA)  
 MATERIALS AND WORKMANSHIP IN ACCORDANCE WITH THE REQUIREMENTS  
 OF PENNDOT PUBLICATION 408 SECTION 605 & 714  
 STEEL REINFORCEMENT A615 GRADE 60 HORIZONTAL AND VERTICAL  
 MAXIMUM EARTH COVER IS 48"  
 SUITABLE FOR H2O LOAD DESIGN



**Continental  
Concrete  
Products, Inc.**  
 1 South Grosstown Rd.  
 Pottstown, PA 19464  
 Phone: (610) 327-3700  
 Fax: (610) 327-9488

**96" DIA. SEEPAGE PIT  
(RECHARGE TANK)**

SIGNATURE OF APPROVAL

DATE    VAR    DWG

2/08/16

**96SP**

STRUCTURE