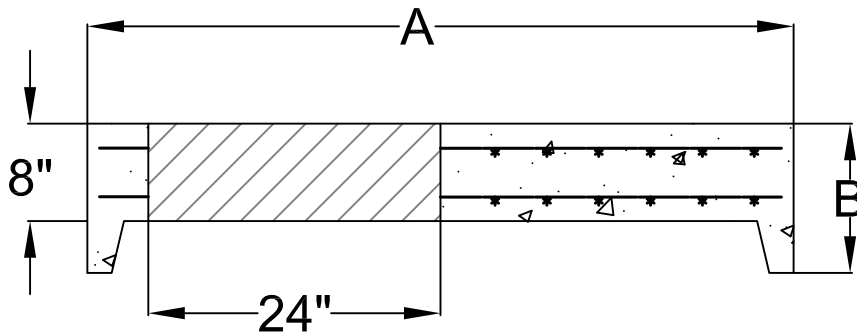
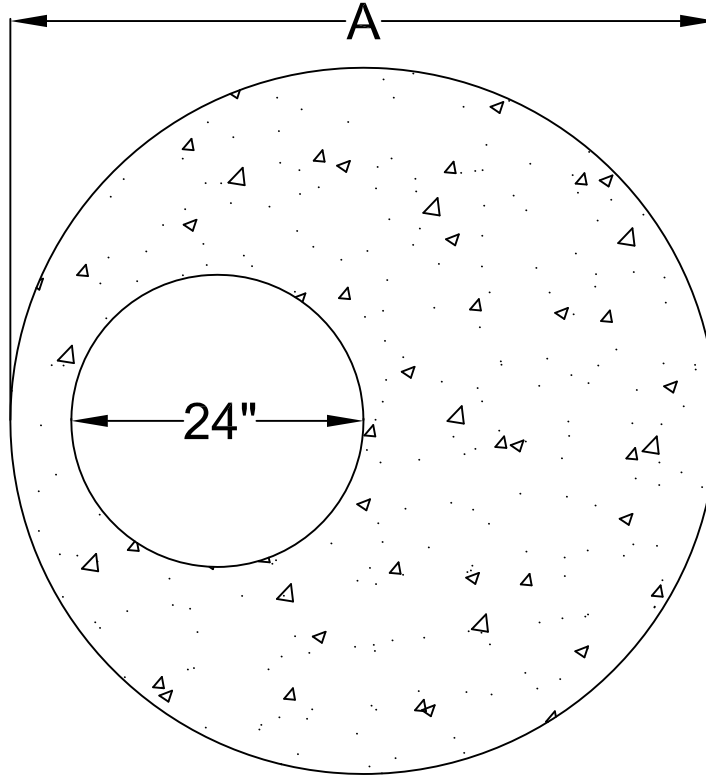


MH Dia.	A	B
48"	58"	12 1/4"
60"	72"	12 3/4"
72"	86"	13"

NOTE: 24" DIA. MANHOLE OPENING SHOWN. AVAILABLE WITH UP TO 36" DIA. MANHOLE OPENING.



**SPECIFICATIONS**

MINIMUM CONCRETE STRENGTH 4000 PSI @28 DAYS (PENNDOT CLASS AA)  
 STEEL REINFORCEMENT -ASTM A615, GRADE 60.  
 WELDED WIRE FABRIC:ASTM A185 (WALLS- 0.12 IN.<sup>2</sup>/VERTICAL FOOT).  
 1½" MIN. CONCRETE COVER (ALL REINFORCEMENT).  
 MANHOLE DESIGN SPECIFICATIONS CONFORMS TO "PRECAST REINFORCED CONCRETE MANHOLE SECTIONS" ASTM C478, LATEST REVISIONS.  
 MEETS HS-25 LOAD REQUIREMENTS.

**Continental  
Concrete  
Products, Inc.**  
 1 South Grosstown Rd.  
 Pottstown, PA 19464  
 Phone: (610) 327-3700  
 Fax: (610) 327-9488

**48" Dia., 60" Dia. & 72" Dia.  
MANHOLE FLAT LID**

SIGNATURE OF APPROVAL

DATE

VAR

DWG

STRUCTURE

2/08/16

48-72MHFL