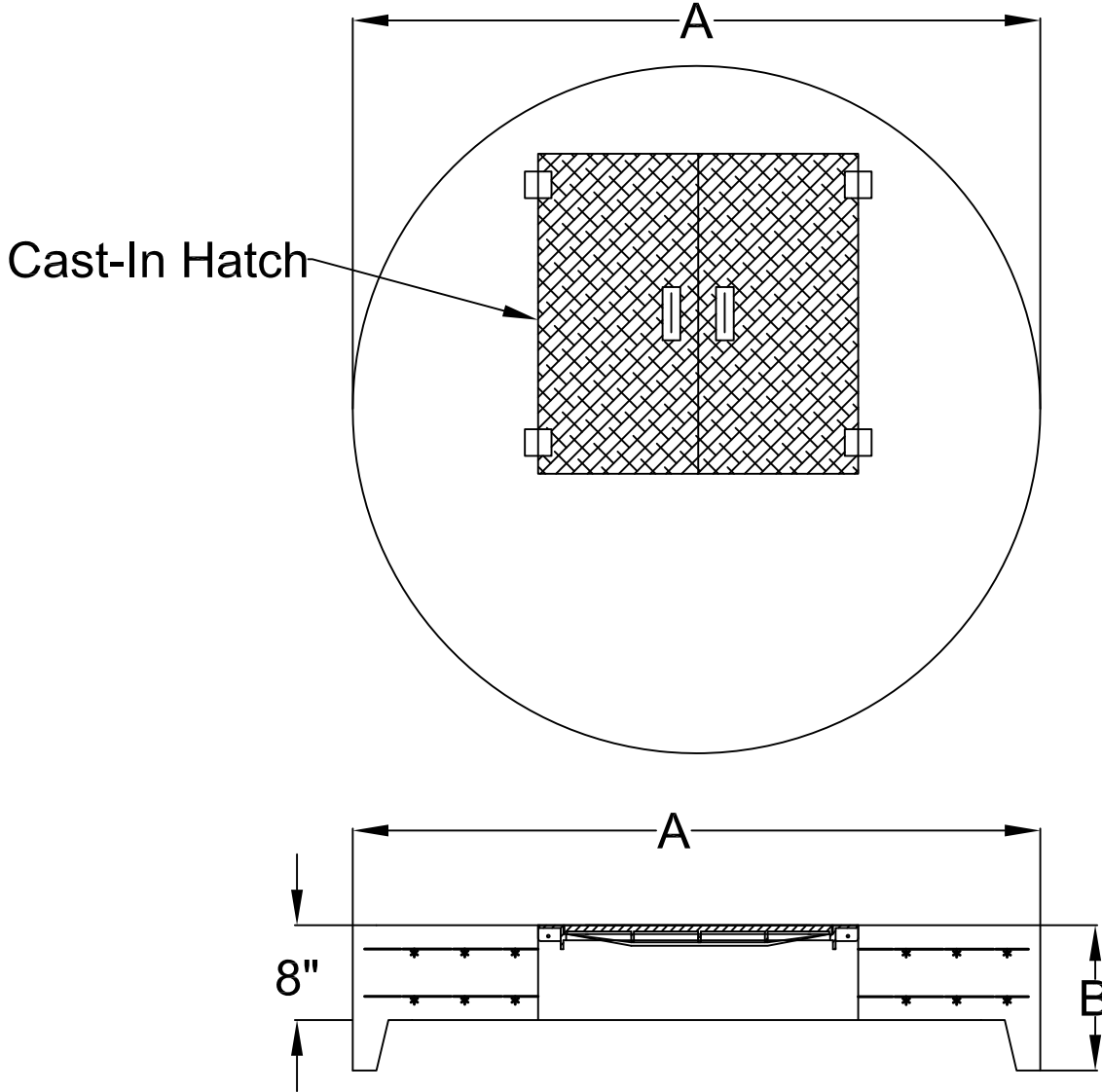


MH Dia.	A	B
48"	58"	12 1/4"
60"	72"	12 3/4"
72"	86"	13"

CAST-IN HATCH VARIES IN DIMENSIONS, STYLE AND LOCATION AS REQUIRED BY FIELD CONDITIONS AND SEPCIFICATIONS.



SPECIFICATIONS

MINIMUM CONCRETE STRENGTH 4000 PSI @28 DAYS (PENNDOT CLASS AA)
 STEEL REINFORCEMENT -ASTM A615, GRADE 60.
 WELDED WIRE FABRIC:ASTM A185 (WALLS- 0.12 IN.²/VERTICAL FOOT).
 1½" MIN. CONCRETE COVER (ALL REINFORCEMENT).
 MANHOLE DESIGN SPECIFICATIONS CONFORMS TO "PRECAST REINFORCED CONCRETE MANHOLE SECTIONS" ASTM C478, LATEST REVISIONS.
 MEETS HS-25 LOAD REQUIREMENTS.



**Continental
Concrete
Products, Inc.**
 1 South Grosstown Rd.
 Pottstown, PA 19464
 Phone: (610) 327-3700
 Fax: (610) 327-9488

**48" Dia., 60" Dia. & 72" Dia.
MANHOLE FLAT LID W/ HATCH DOOR**

SIGNATURE OF APPROVAL

DATE

VAR

DWG

STRUCTURE

2/08/16

48-72MHFLHD