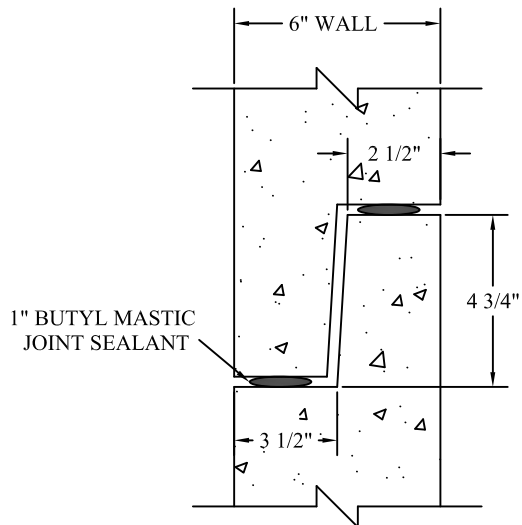
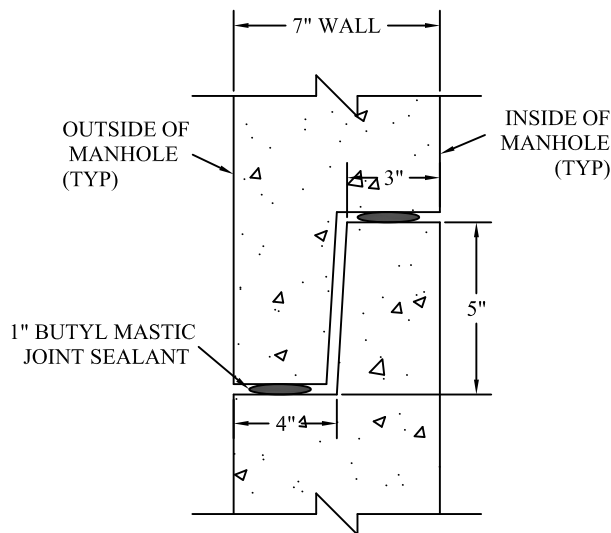


**48" DIA. MANHOLE**



**60" DIA. MANHOLE**



**72" DIA. MANHOLE**

NOTE: ALL JOINTS CONFORM TO QUINN MACHINE & FOUNDRY #7R CONFIGURATIONS

**SPECIFICATIONS**

- MINIMUM CONCRETE STRENGTH 4000 PSI @28 DAYS (PENNDOT CLASS AA)
- STEEL REINFORCEMENT -ASTM A615, GRADE 60.
- WELDED WIRE FABRIC:ASTM A185 (WALLS- 0.12 IN.<sup>2</sup>/VERTICAL FOOT).
- 1 1/2" MIN. CONCRETE COVER (ALL REINFORCEMENT).
- MANHOLE DESIGN SPECIFICATIONS CONFORMS TO "PRECAST REINFORCED CONCRETE MANHOLE SECTIONS" ASTM C478, LATEST REVISIONS.
- MEETS HS-25 LOAD REQUIREMENTS.



**Continental  
Concrete  
Products, Inc.**  
1 South Grosstown Rd.  
Pottstown, PA 19464  
Phone: (610) 327-3700  
Fax: (610) 327-9488

**48" Dia., 60" Dia. & 72" Dia.  
MANHOLE JOINT DETAIL**

SIGNATURE OF APPROVAL

DATE

AR

DWG

STRUCTURE

2/08/16

48-72MHJD