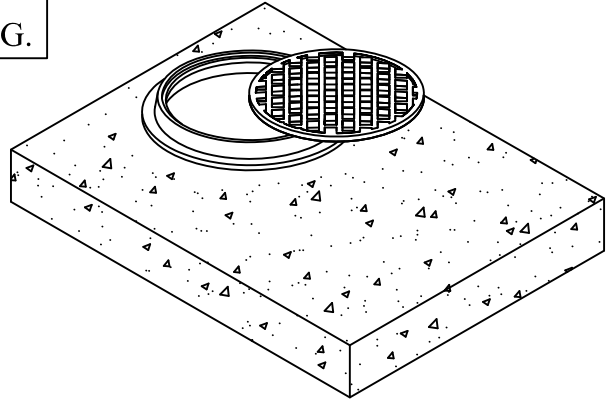
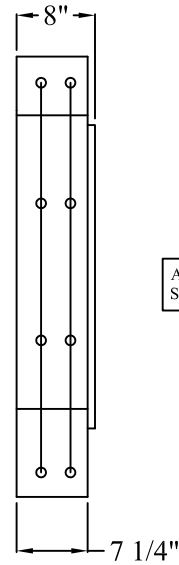
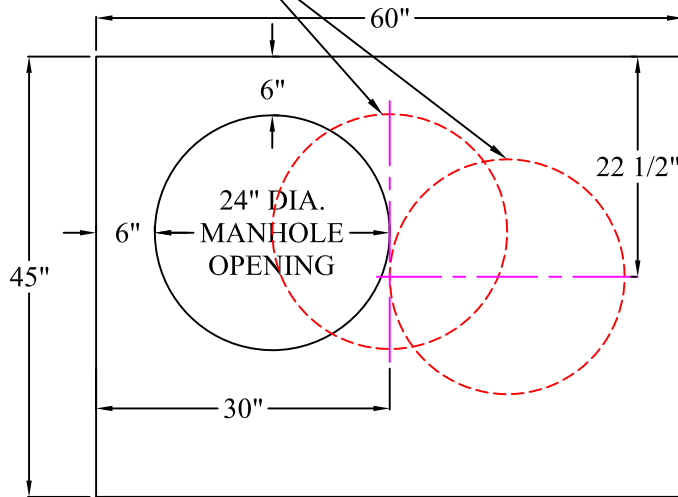


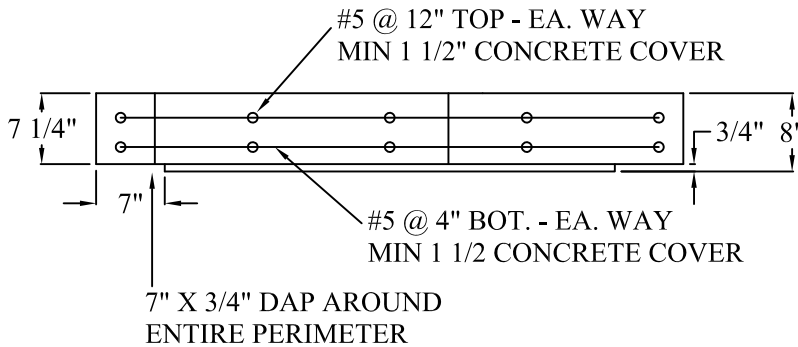
NOTE: 24" DIA. MANHOLE OPENING SHOWN.  
 AVAILABLE WITH UP TO 30" DIA. MANHOLE OPENING.



OTHER LOACTIONS FOR  
 MANHOLE OPENING



ALSO AVAILABLE AS A  
 SOLID CAP (NO OPENINGS)



SPECIFICATIONS:

MINIMUM CONCRETE STRENGTH 4000 PSI @ 28 DAYS (PENNDOT CLASS AA)  
 MATERIALS AND WORKMANSHIP IN ACCORDANCE WITH THE REQUIREMENTS  
 OF PENNDOT PUBLICATION 408 SECTION 605 & 714  
 STEEL REINFORCEMENT A615 GRADE 60 HORIZONTAL AND VERTICAL

**Continental  
 Concrete  
 Products, Inc.**  
 1 South Grosstown Rd.  
 Pottstown, PA 19464  
 Phone: (610) 327-3700  
 Fax: (610) 327-9488

**33" X 48" INLET  
 CONVERSION LID w/ MAX. 30" DIA.  
 MANHOLE FRAME & COVER**

SIGNATURE OF APPROVAL

DATE

IAR

DWG

STRUCTURE

2/08/16

**33X48-MHCV**