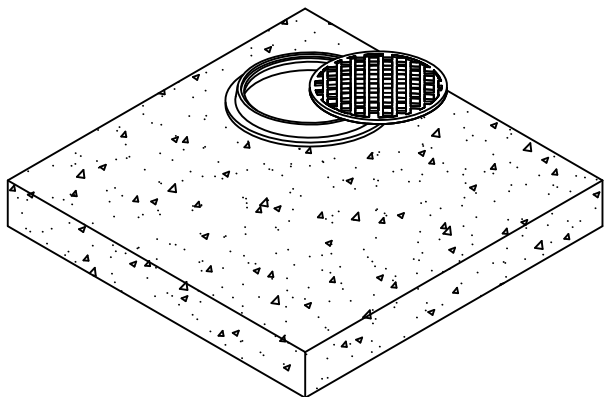
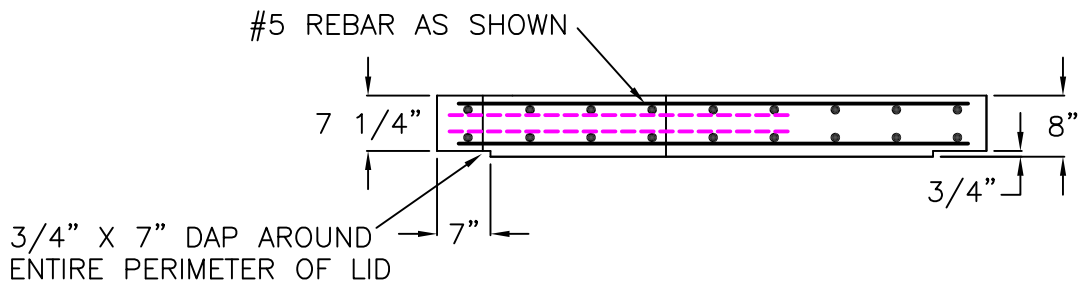
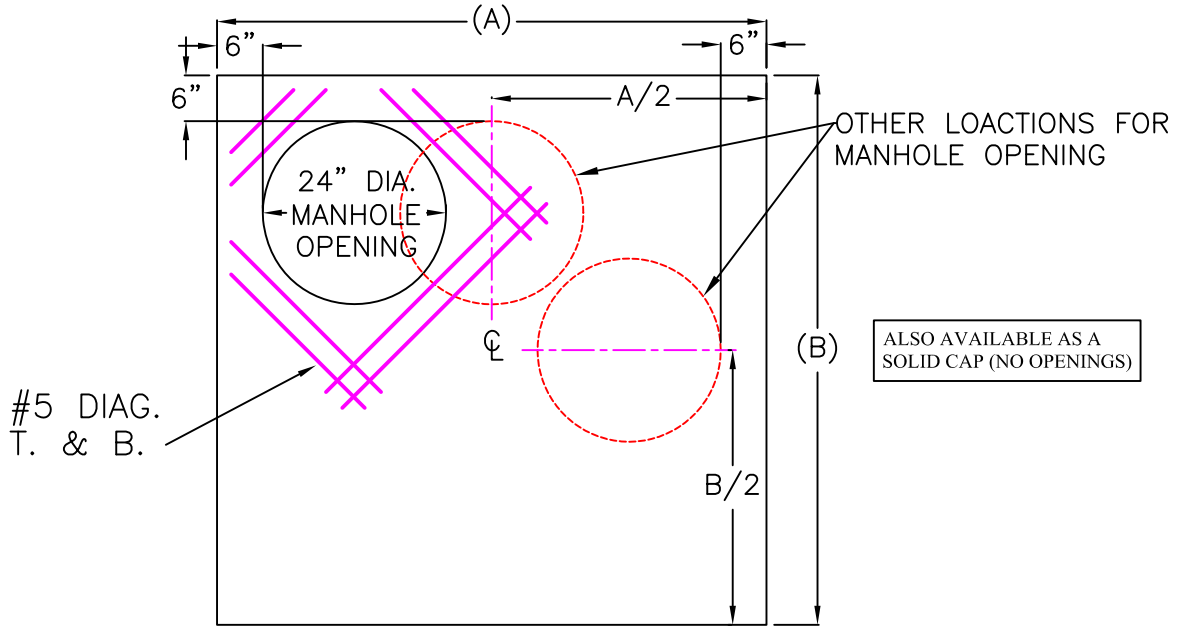


BOX SIZE	(A)	(B)
48"x48" ID TYPE 4	60"	60"
60"x60" ID TYPE 5	72"	72"
72"x72" ID TYPE 6	84"	84"
72"x72" ID W/8" WALL	88"	88"

NOTE: 24" DIA. MANHOLE OPENING SHOWN.  
AVAILABLE WITH UP TO 36" DIA. MANHOLE OPENING.



MANHOLE OPENING TO BE LOCATED AS REQUIRED BY FIELD CONDITIONS



**SPECIFICATIONS:**

MINIMUM CONCRETE STRENGTH 4000 PSI @ 28 DAYS (PENNDOT CLASS AA)  
MATERIALS AND WORKMANSHIP IN ACCORDANCE WITH THE REQUIREMENTS  
OF PENNDOT PUBLICATION 408 SECTION 605 & 714  
STEEL REINFORCEMENT A615 GRADE 60 HORIZONTAL AND VERTICAL

**Continental  
Concrete  
Products, Inc.**  
1 South Grosstown Rd.  
Pottstown, PA 19464  
Phone: (610) 327-3700  
Fax: (610) 327-9488

48" X 48", 60" X 60" & 72" X 72" INLET CONVERSION LID w/ MAX. 36" DIA. MANHOLE FRAME & COVER			
SIGNATURE OF APPROVAL	DATE	AR	DWG
	2/08/16		48x48/72x72-MHCV
			STRUCTURE