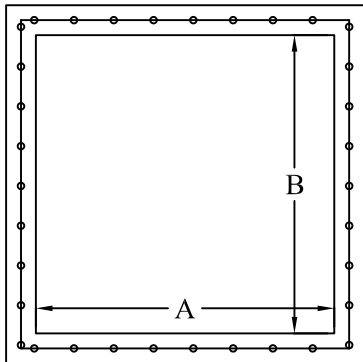
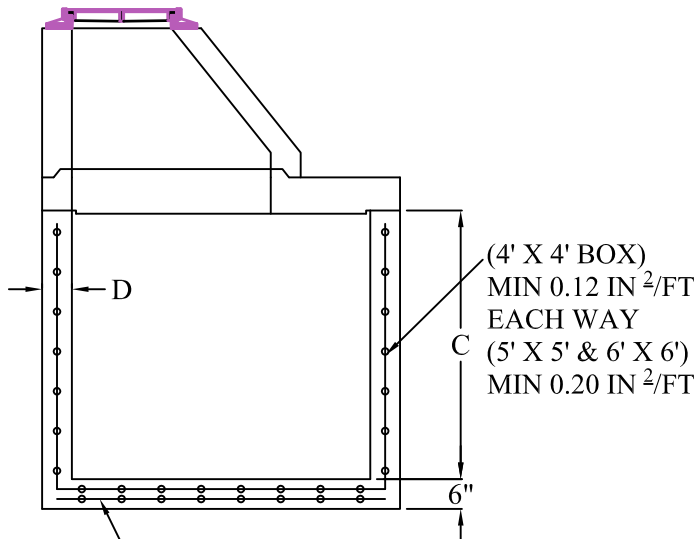
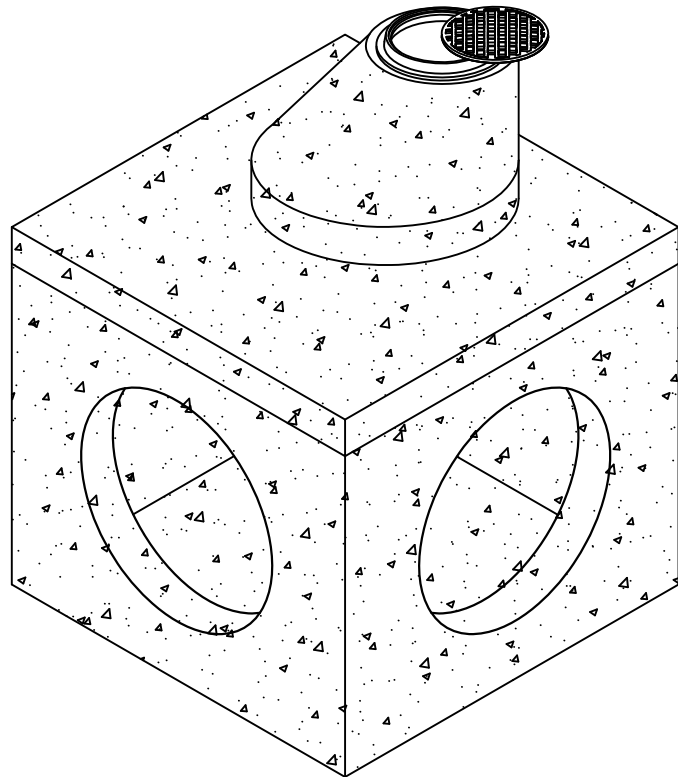


BOX SIZE	(A)	(B)	(C)	(D)	SECTION WEIGHT	CONVERSION LID OD
48" X 48"	48"	48"	MAX 72"	6"	5 TONS	60" X 60"
60" X 60"	60"	60"	MAX 72"	6"	6 TONS	72" X 72"
72" X 72"	72"	72"	MAX 96"	6"	9 TONS	84" X 84"



PLAN VIEW



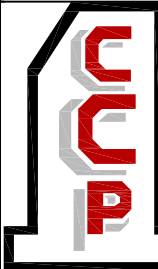
(4' X 4' BOX)
MIN 0.12 IN²/FT
EACH WAY
(5' X 5' & 6' X 6')
MIN 0.20 IN²/FT

D6.7 X D6.7WWF
COMPLIES WITH MIN 0.20
IN²/FT EACH WAY EACH
LAYER

SECTION VIEW

SPECIFICATIONS:

MINIMUM CONCRETE STRENGTH 4000 PSI @ 28 DAYS (PENNDOT CLASS AA)
MATERIALS AND WORKMANSHIP IN ACCORDANCE WITH THE REQUIREMENTS
OF PENNDOT PUBLICATION 408 SECTION 605 & 714
STEEL REINFORCEMENT A615 GRADE 60 HORIZONTAL AND VERTICAL



**Continental
Concrete
Products, Inc.**
1 South Grosstown Rd.
Pottstown, PA 19464
Phone: (610) 327-3700
Fax: (610) 327-9488

48" X 48", 60" X 60" & 72" X 72"
MODIFIED STORM SEWER MANHOLE

SIGNATURE OF APPROVAL

DATE

AR

DWG

STRUCTURE

2/08/16

48x48/72x72MH